

Tulare County

**The Tulare County Courthouse in Visalia.
Part 1 of 6: Tulare, Visalia, Farmersville, Pixley,
Porterville, Allensworth State Park.**



Tulare County Data

Population: 368,021 (Rank: 21)

Land Area (square miles): 4,824 (Rank: 7)

The county was created in 1852. It is named for the tules (tú-lees.; reed-like water plants) that grew around the giant lake that used to form in the lower end of the valley each winter. It was named by Pedro Fages, a Spanish soldier, who was looking for deserters in 1772 and crossed over the Tehachapis and gazed down and saw the lake. The root of the name comes from the Mexican word "tullin" meaning cattails and similar reeds.

The eastern part of the county stretches to the summit of the Sierras. Mt. Whitney, the tallest mountain in the lower 48 states, is located in the county. Sequoia National Park, Sequoia National Forest, Inyo National Forest and the Giant Sequoia National Monument are located here along with the Tule Lake Indian Reservation.

The Kaweah River flows into the county and disappears into the valley. There is a dam on the river that forms Lake Kaweah. The Tule River also flows into the valley. A dam forms Lake Success.

Highway 99 cuts through the middle of the county.

The rest of the county is in the valley and is highly productive farmland. It is the second-ranked farm county in the state. The leading commodities are milk, oranges, grapes, cattle, plums, cotton, hay, peaches, nectarines and corn.

Cities: Visalia, Tulare, Lindsay, Porterville, Exeter, Farmersville, Dinuba, Woodlake. Towns: Springville, Oroshi, Cutler, Allensworth, Yettem.

Tulare County

© 2012 by Larry Stevens
stevens.lawrence@comcast.net



Tulare

Tulare is on Highway 99. It has a population of 60,000. The city was incorporated in 1888. (June 2002)



Tulare

(June 2002)



Tulare

(June 2002)



Tulare

(June 2002)



Tulare

(June 2002)



Tulare

(June 2002)



Tulare

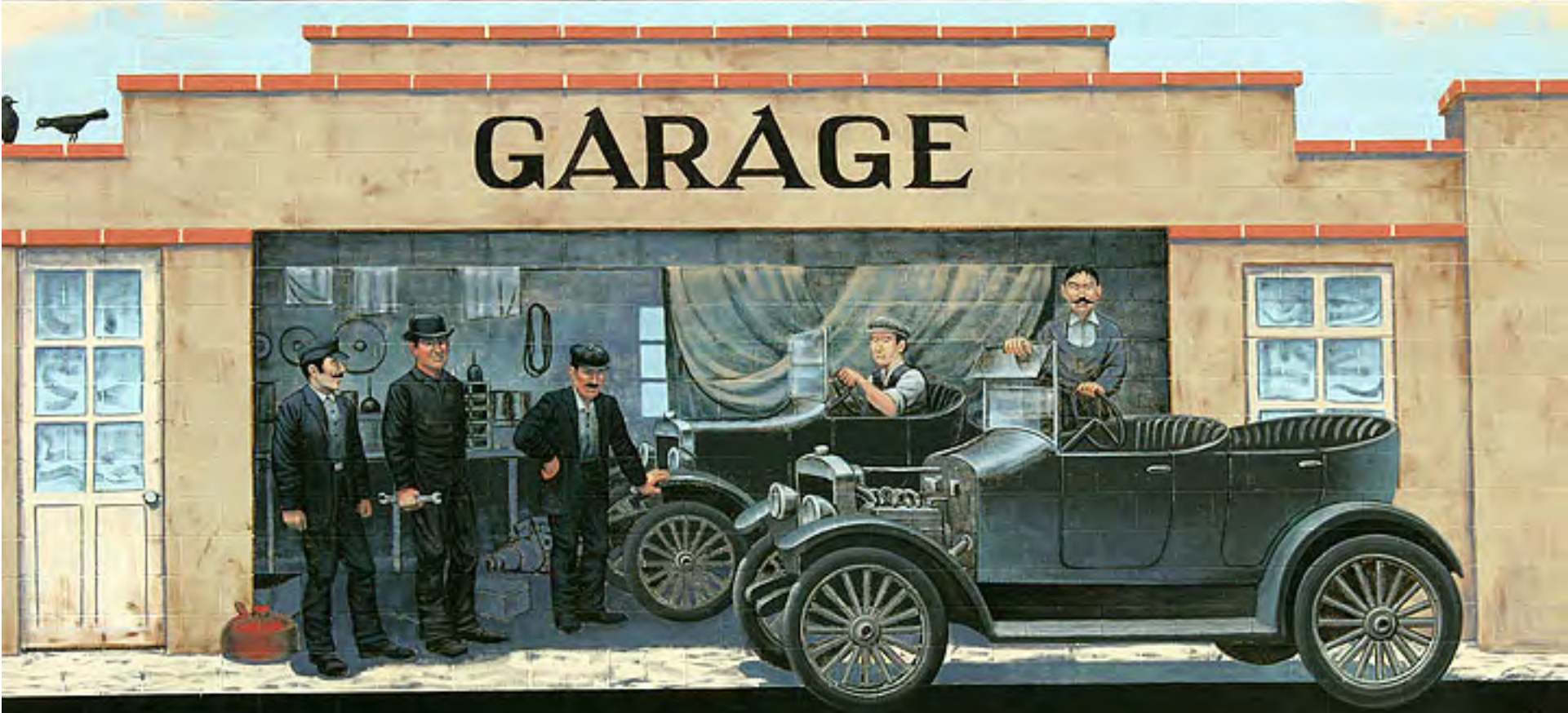
(June 2002)



Tulare

(June 2002)





Tulare

(June 2002)





Tulare

(June 2002)



Visalia

This city dates back to 1852. It was incorporated in 1874. It has a diverse economy, not just farming. Its population is 124,000. (November 2009)



Visalia

(November 2009)



Visalia

(November 2009)



Visalia

(November 2009)



Visalia

(November 2009)



Visalia

(November 2009)



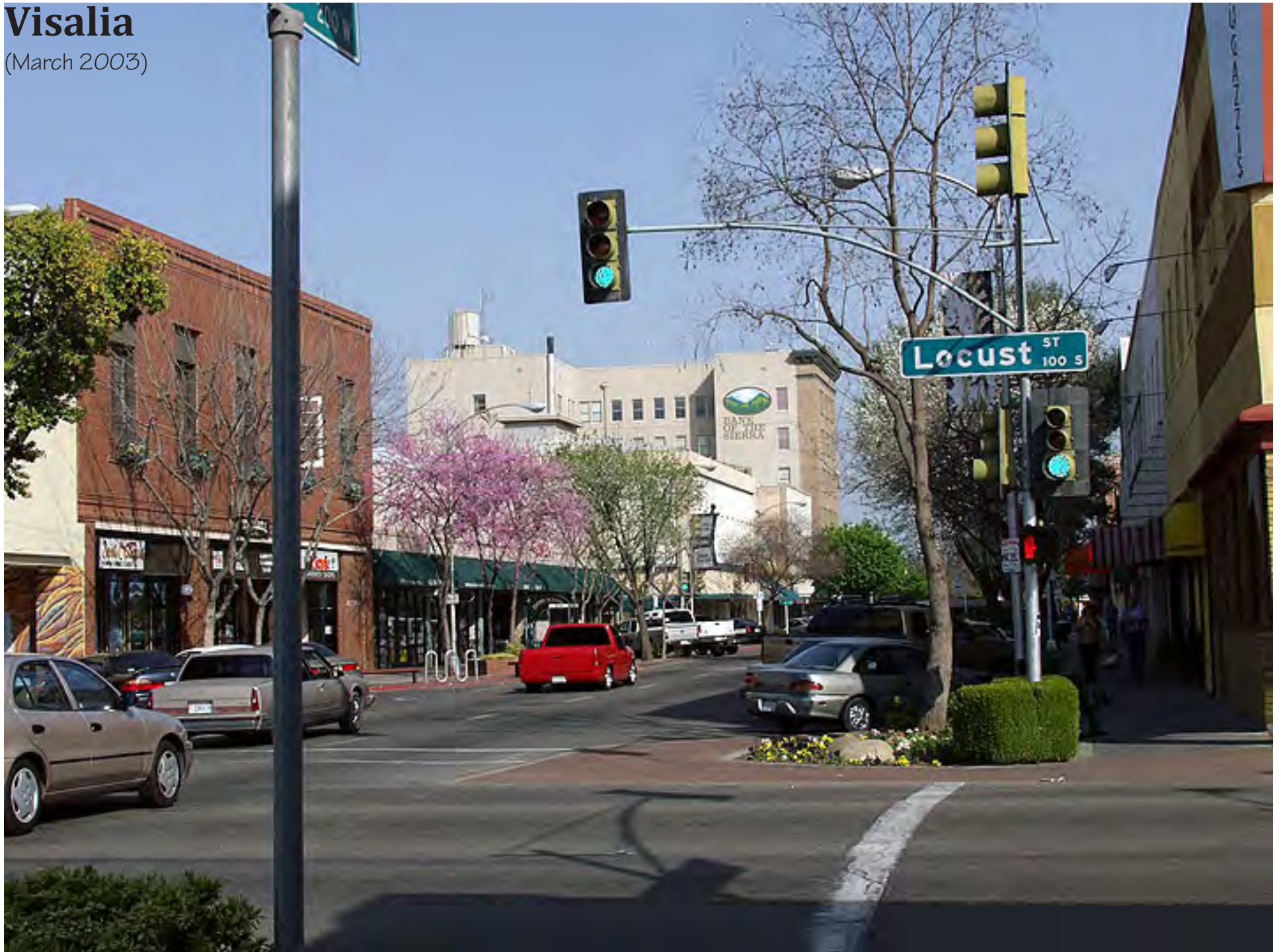
Visalia

(March 2003)



Visalia

(March 2003)



Visalia

(March 2003)



Visalia
(March 2003)



Visalia



Visalia



Visalia



Farmersville

Farmersville has a population of 10,600. It was incorporated in 1960. (March 2003)



Farmersville

(November 2009)



Farmersville

(November 2009)



Farmersville

(November 2009)



Pixley

Pixley is a poor farm town on Highway 99.
It has a population of 3,300. (May 2005)





Pixley

(May 2005)



Pixley

(May 2005)



Pixley

(May 2005)



Pixley

(May 2005)





Pixley

(May 2005)



Pixley

(May 2005)



**FIRST
BAPTIST**
SUNDAY — 9:00 / 11 AM
SUNDAY SCHOOL
MONDAY — 7:00 AM
WEDNESDAY — 7:00 AM
THURSDAY — 7:00 AM
FRIDAY — 7:00 AM
SATURDAY — 7:00 AM
PRAYER — 7:00 AM



Porterville

Porterville dates back to 1864. Today it has a population of 54,000.



Porterville

(March 2003)



Porterville

(March 2003)



Allensworth

Allensworth began in 1908 as an all-Black community. It failed. Now the buildings are being restored as a state park. (October 2003)



Allensworth

General Store. (October 2003)



Allensworth

Hotel. (October 2003)



Allensworth

Church. (October 2003)



Allensworth

School house. (October 2003)



Allensworth

Hotel from the rear. (October 2003)

