

Santa Rosa Sights



The garden at the Luther Burbank house in Santa Rosa.
The pictures were taken in 2012. Burbank was the great
“plant inventor.”





The greenhouse at the Burbank house. This is where he established a four-acre farm for his research. The house is modest. It is now a park in downtown Santa Rosa.











Burbanks work in plant development is overwhelming.

Here is a partial list:

113 types of plum

35 types of fruiting cactus

16 types of blackberries

13 types of raspberries

11 types of quinces

11 types of plumcots

11 types of cherries

10 types of strawberries

10 types of apples

8 types of peaches

6 types of chesnuts

5 types of nectarines

4 types of grapes

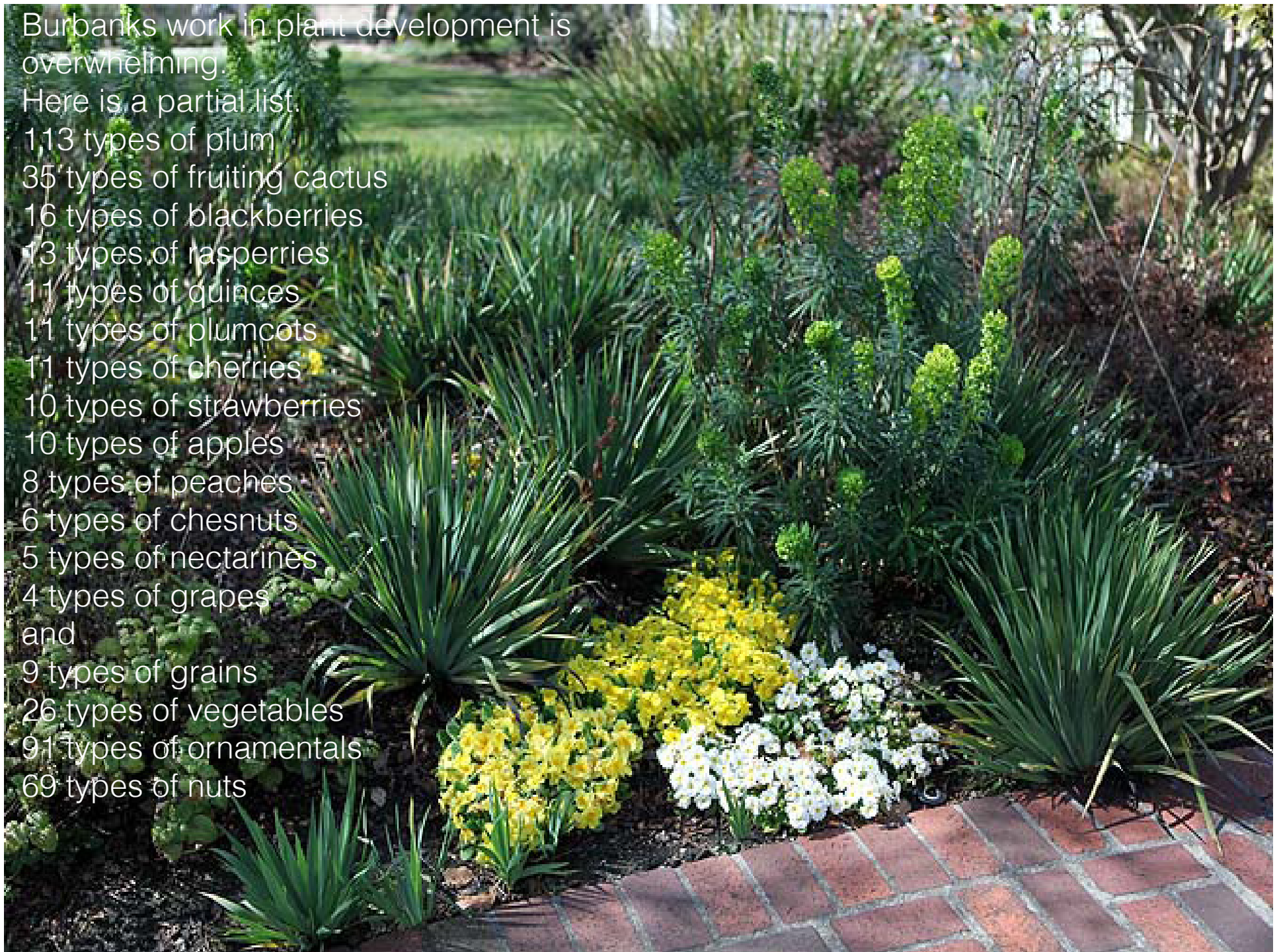
and

9 types of grains

26 types of vegetables

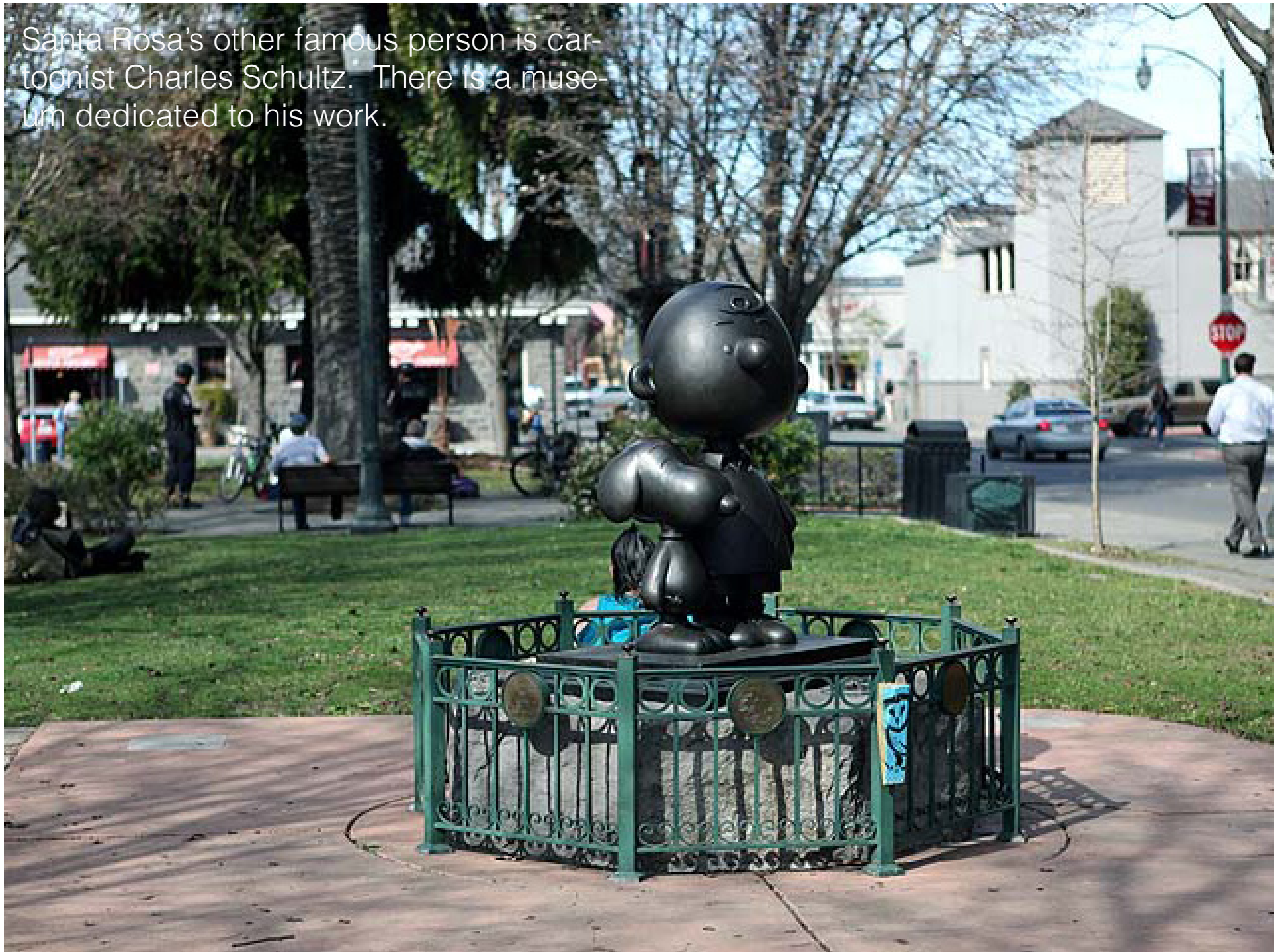
91 types of ornamentals

69 types of nuts





Santa Rosa's other famous person is cartoonist Charles Schultz. There is a museum dedicated to his work.



Railroad Square is the historic district of Santa Rosa.



LoCoco's
"CUCINA RUSTICA"

TRATTORIA

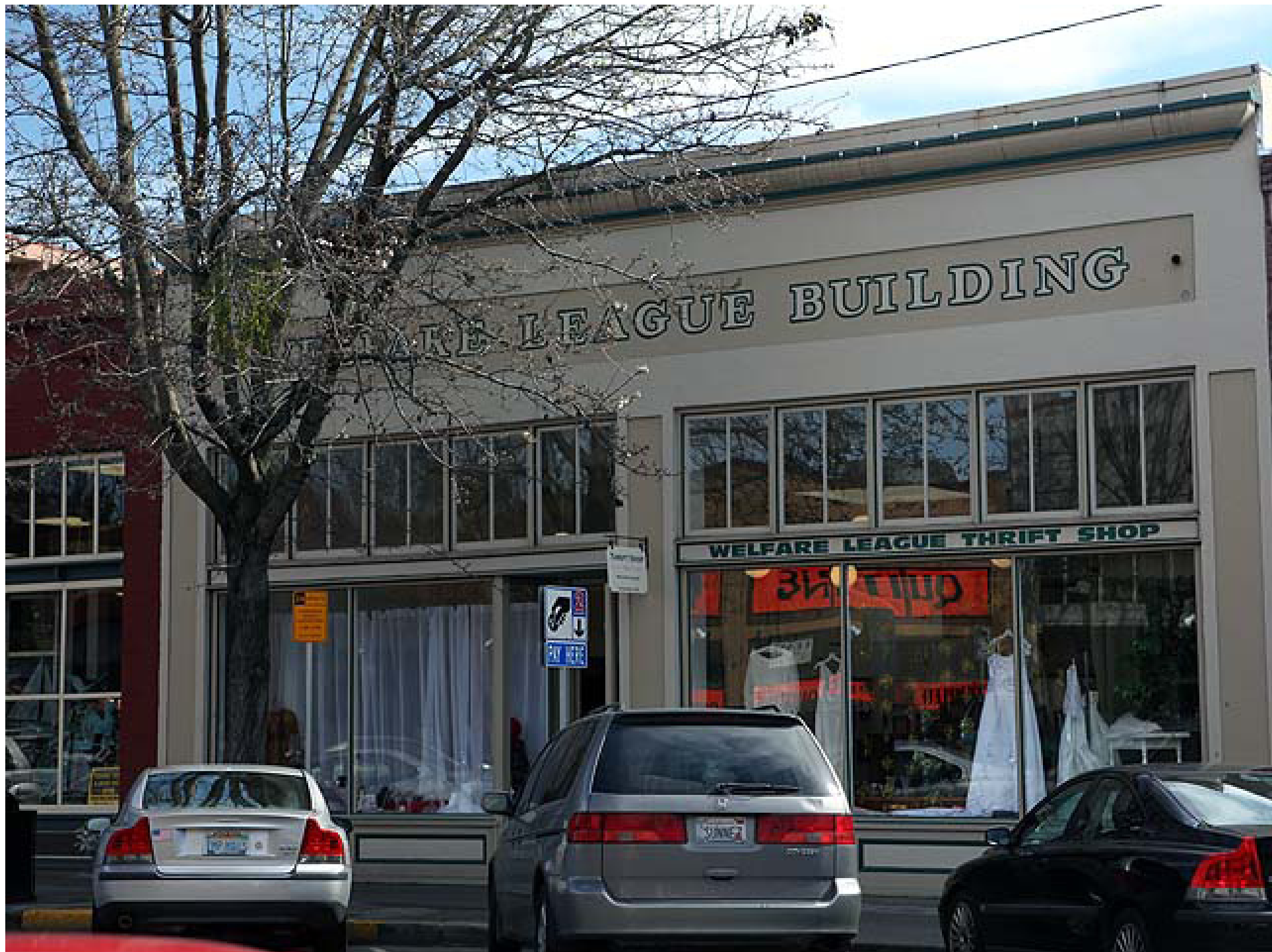
Sushi



To Dai For















The End

This trip was taken in 2012. Actually we were staying in San Francisco and decided to run up to Santa Rosa to photograph their city hall.

Larry Stevens