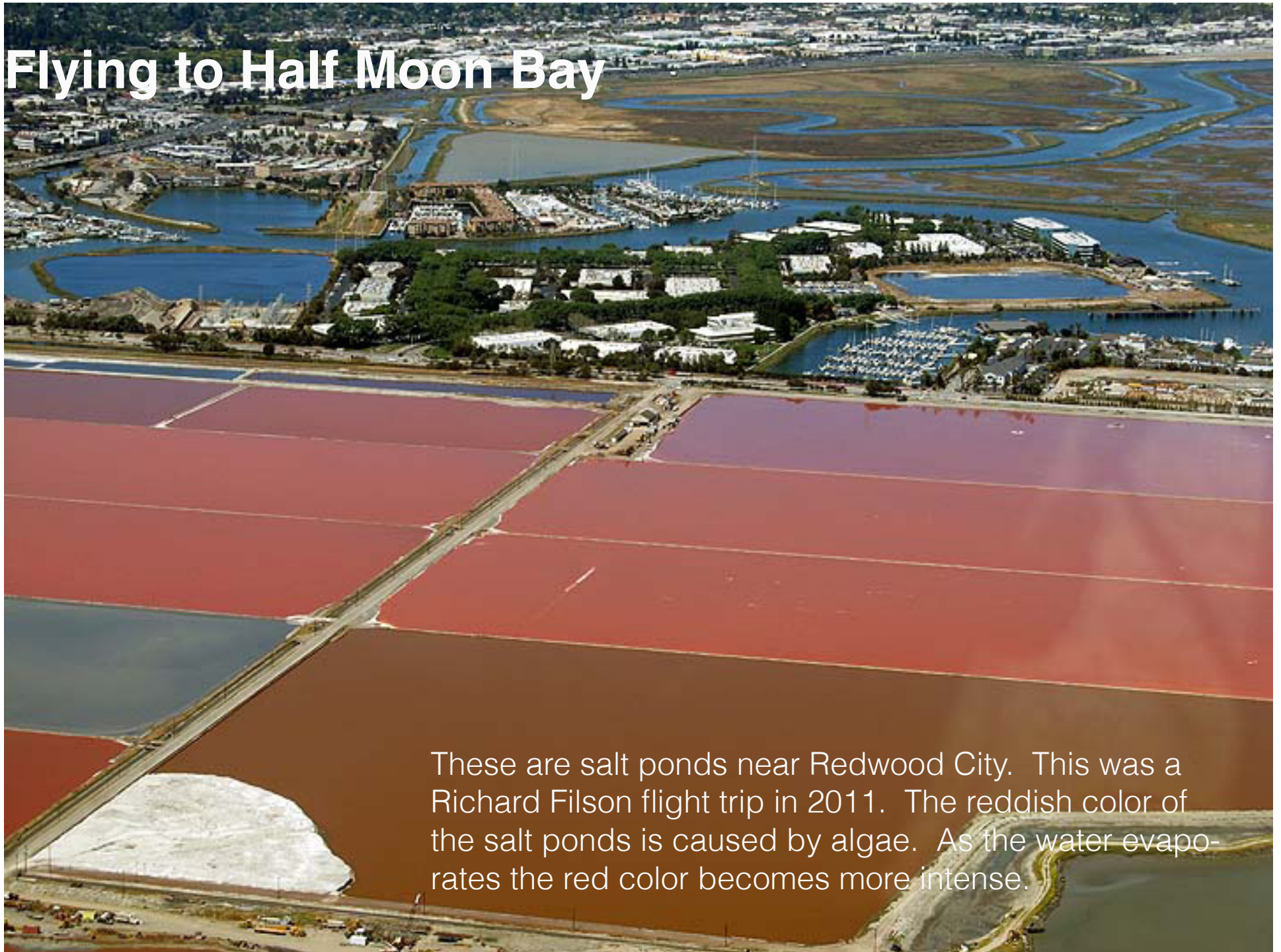


# Flying to Half Moon Bay



These are salt ponds near Redwood City. This was a Richard Filson flight trip in 2011. The reddish color of the salt ponds is caused by algae. As the water evaporates the red color becomes more intense.



Altamont Pass, one of the largest windmill farms in the world.











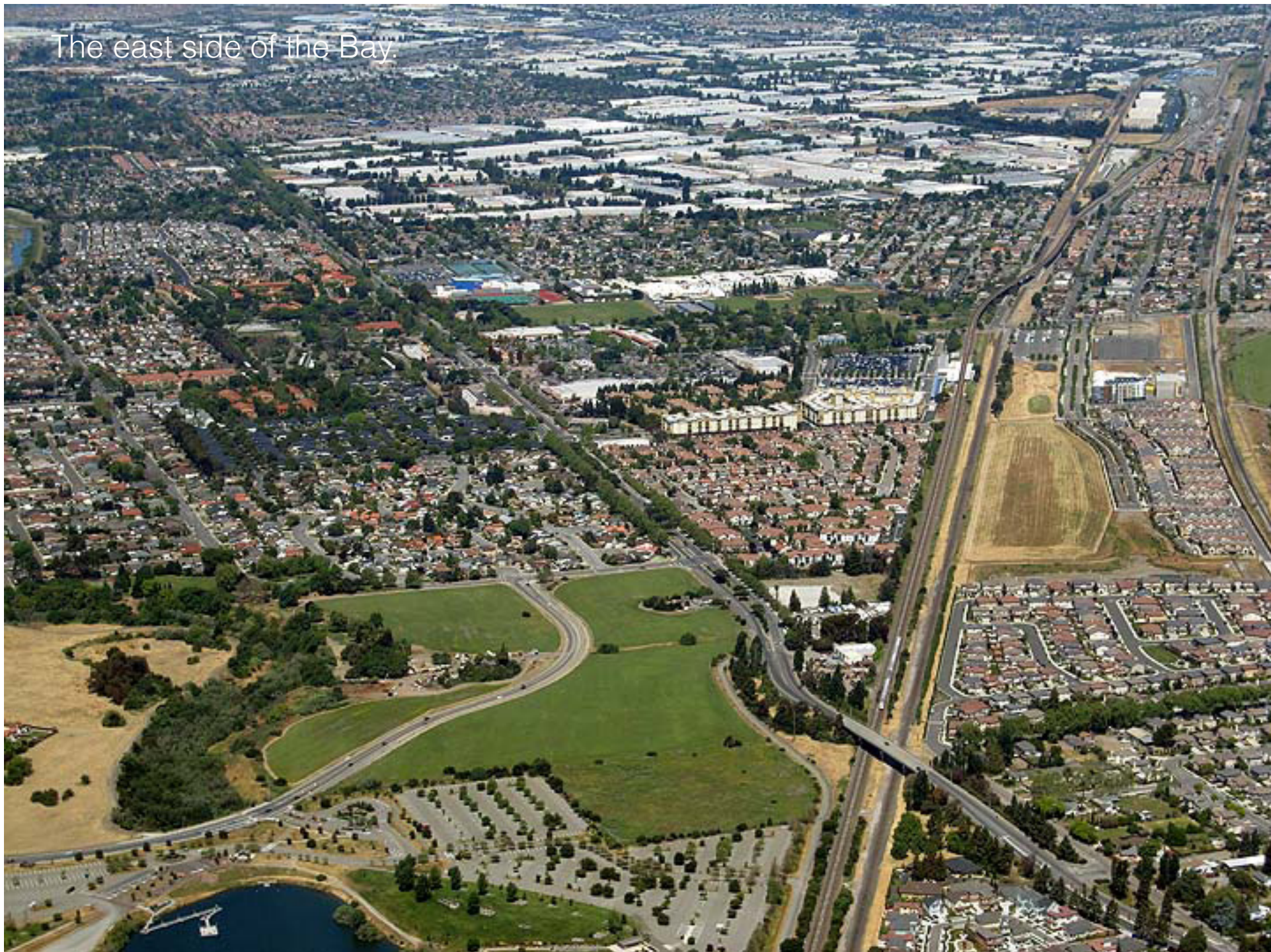


The east side of the Bay



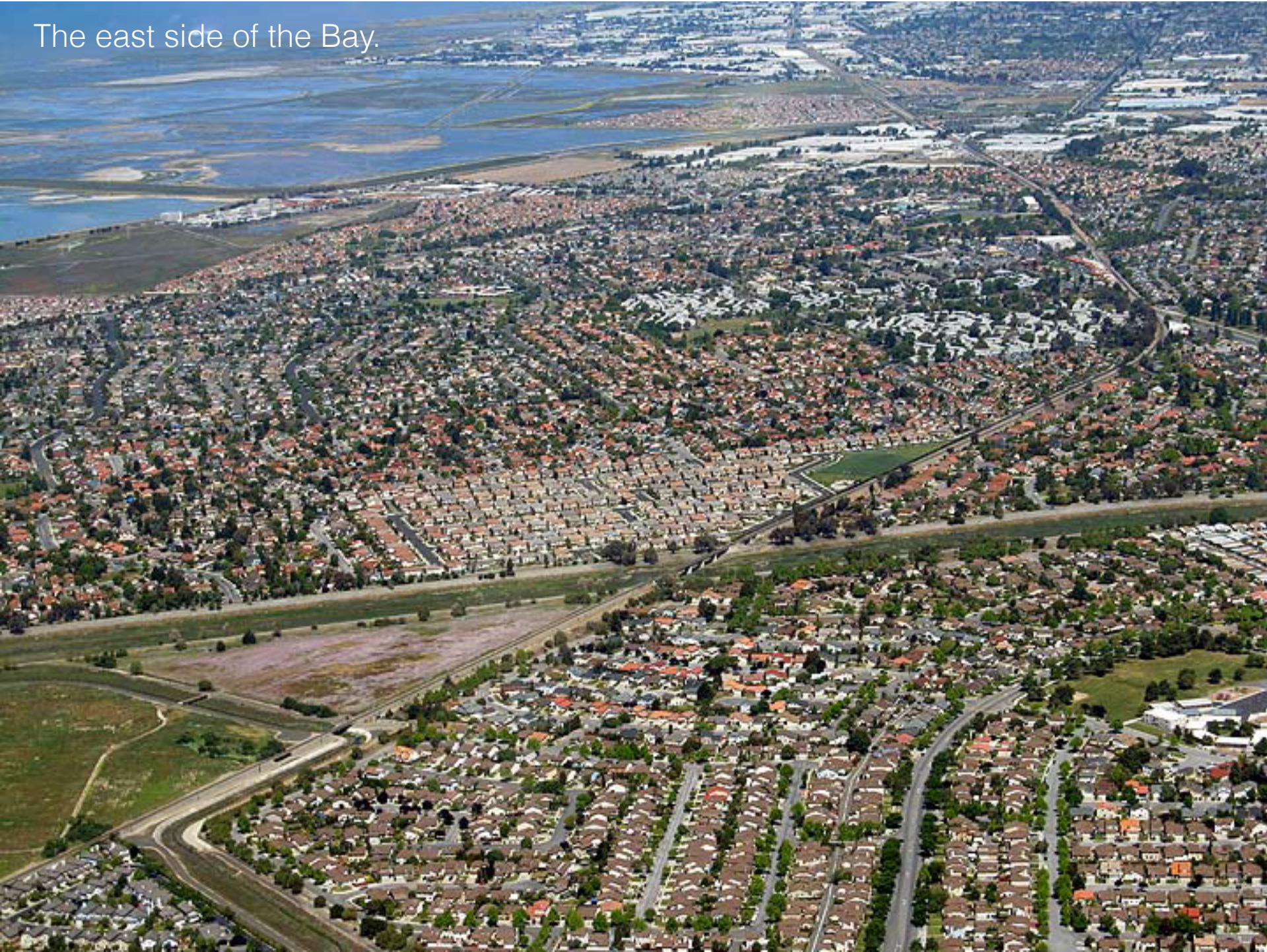


The east side of the Bay.





The east side of the Bay.





The east side of the Bay.





The east side of the Bay.





The east side of the Bay.







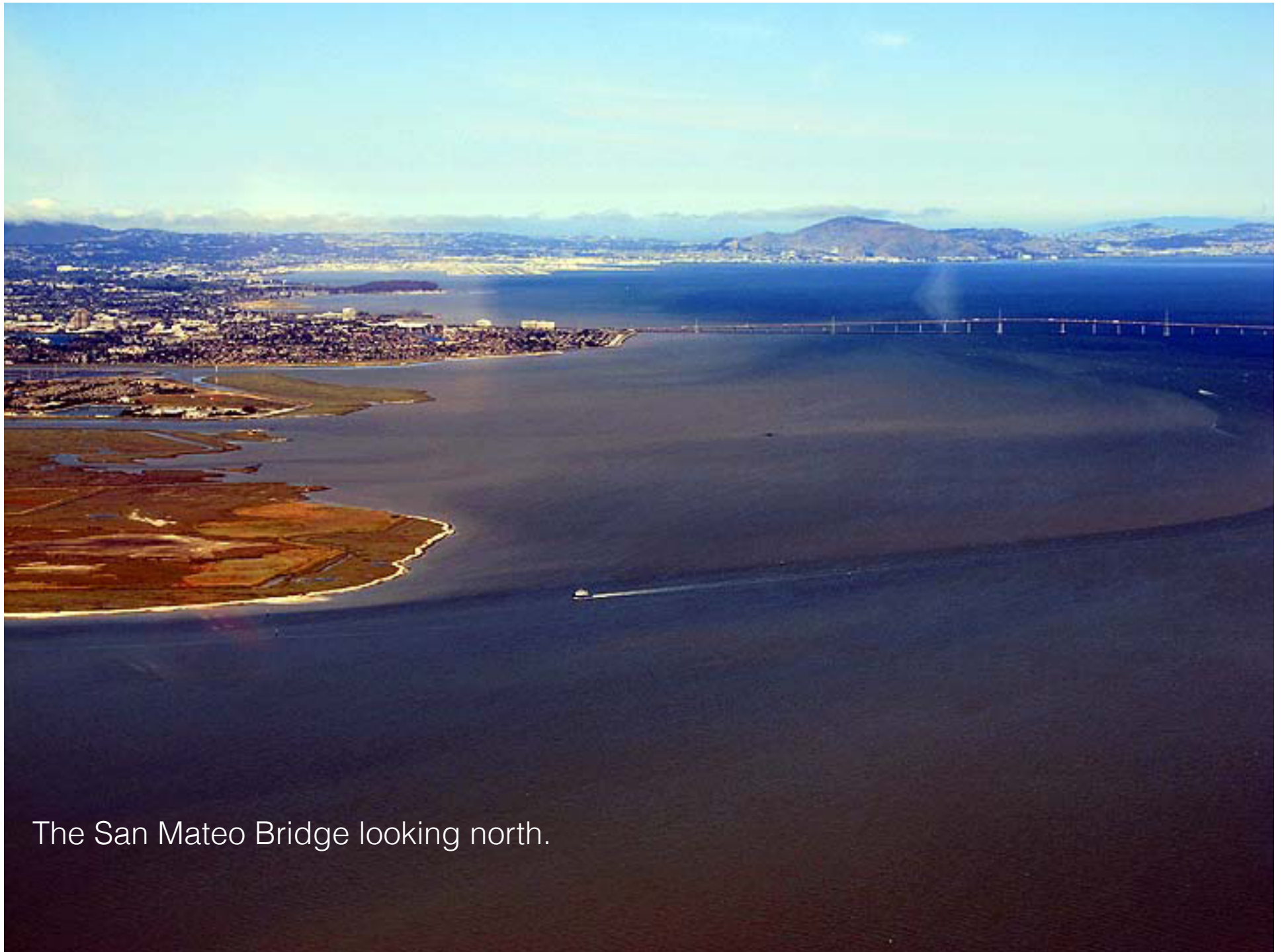












The San Mateo Bridge looking north.









The port in Redwood City. Below the port is Redwood Shores, an office development.









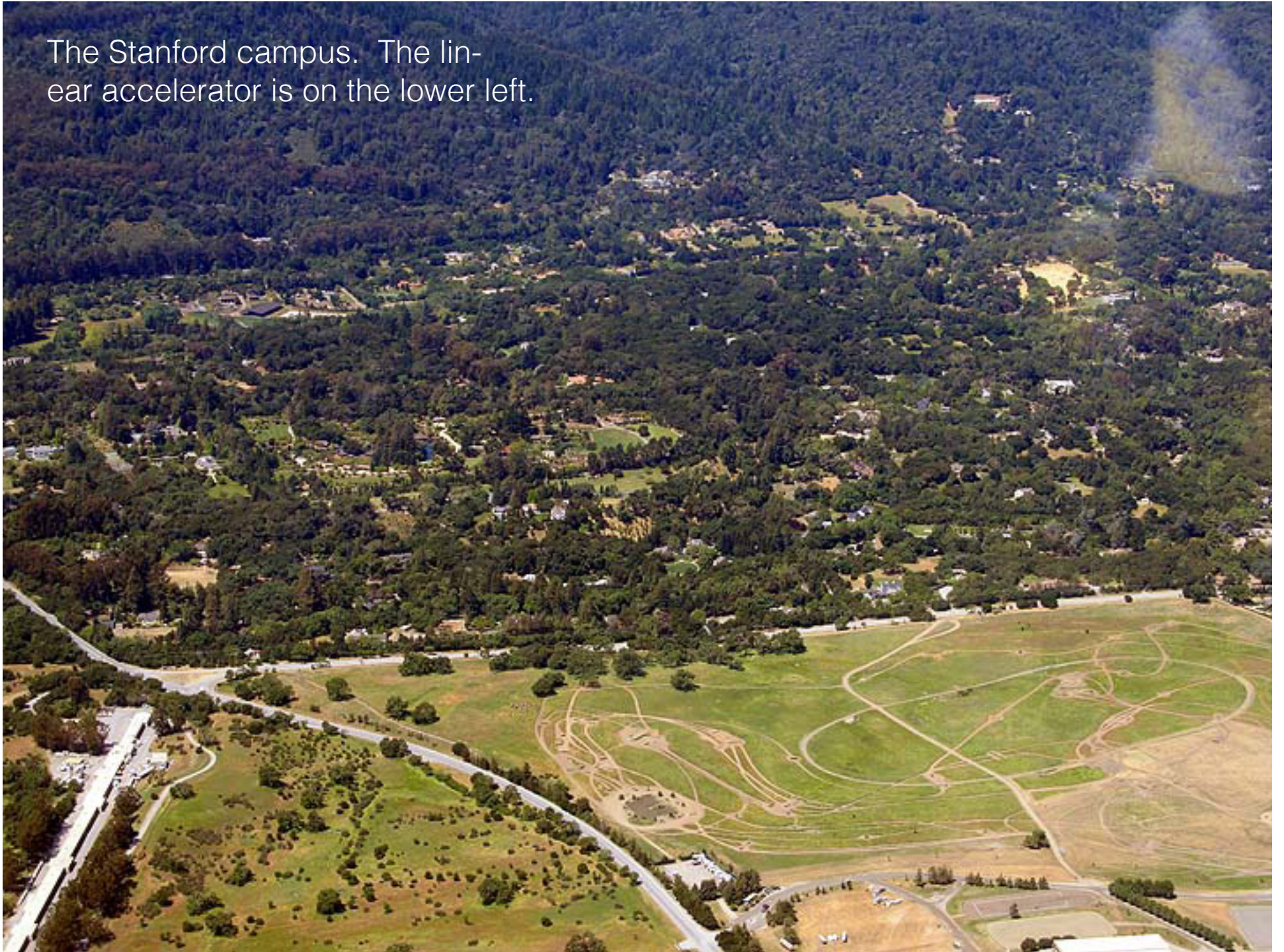


That is the 101 freeway on the left. Salt ponds on the right.





The Stanford campus. The linear accelerator is on the lower left.



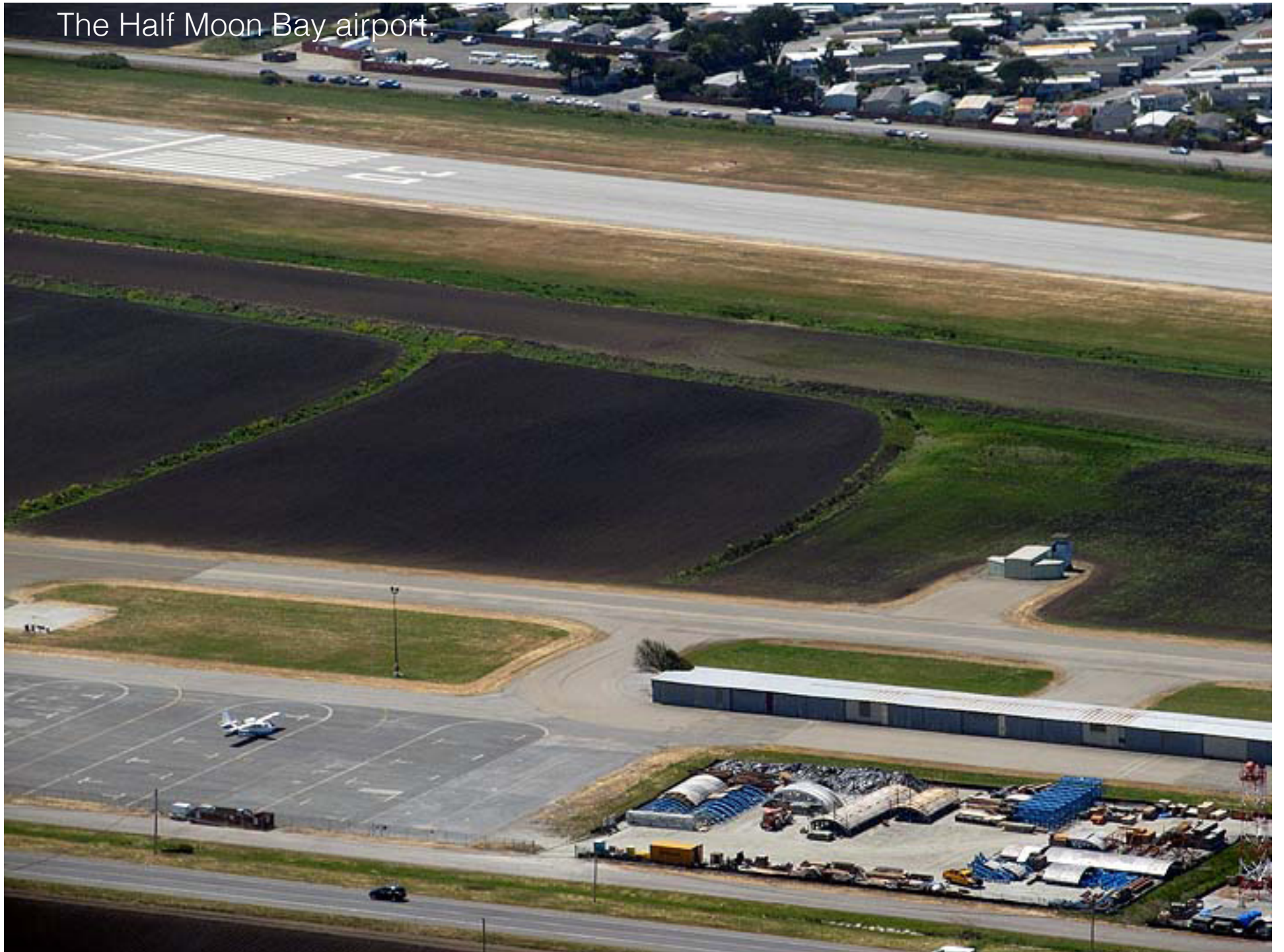


Green houses in Half Moon Bay.





The Half Moon Bay airport.





This is Pillar Point. It is a navy radar base. Just on the other side of the dome is the Mavericks, the famous surfing spot.





The harbor at Princeton by the Sea.







The fishing fleet at Princeton-by-the-Sea. We were here when you could buy fresh crab off the dock.











Mezza Luna is a high quality restaurant right at the end of the runway.





# The end

These pictures were taken in May 2011. Richard Filson piloted the plane.