

# The Delta and the North San Joaquin Valley

This is the western edge of Stockton where it runs up against the Delta. There are two country clubs and some upscale subdivisions. The Calaveras River winds between the two country clubs.





The Country Club neighborhood in west Stockton. The water way at the bottom is Smith's Canal. This is where we live. I-5 is to the right.

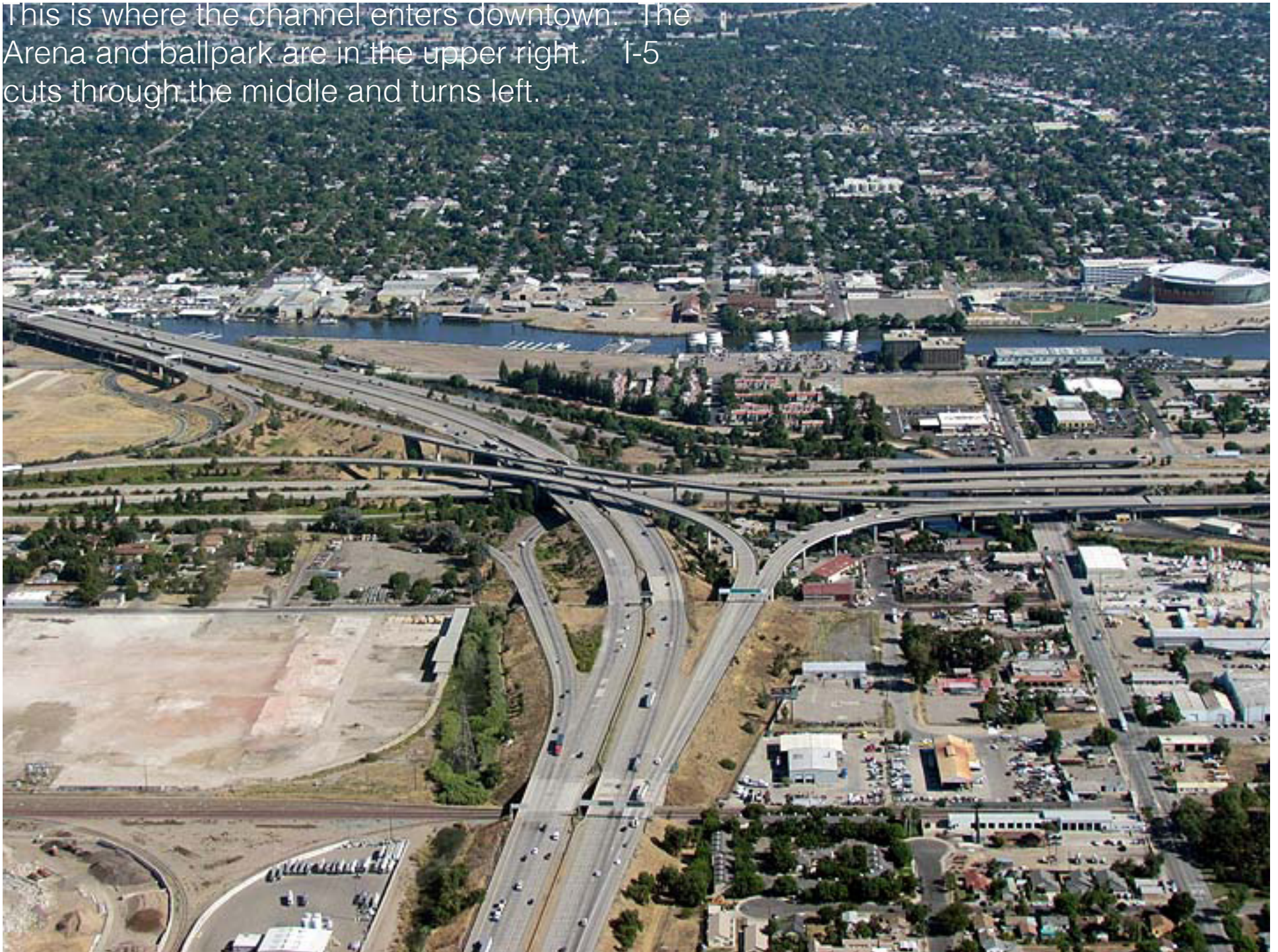


I-5 as it crosses the channel. The port is to the left.





This is where the channel enters downtown. The Arena and ballpark are in the upper right. I-5 cuts through the middle and turns left.





Stockton has a large train yard.







Delta farmland.





The deep water channel that allows ocean ships to come to Stockton is in the upper right.



Delta farmland.





The railroad cuts across the Delta. The pipes toward the bottom is the East Bay aqueduct which carries water from the Mokelumne River to Oakland and the East Bay.





Discovery Bay is a planned community in the Delta. It has a population of 13,000. Construction began in 1964.







Discovery Bay.



Discovery Bay. It is a subdivision built on Delta farm land. Mt. Diablo is in the distance. It is about 4,000 feet high. Discovery Bay is about sea level or lower.





Discovery Bay.





Looking north towards  
the city of Brentwood.





A couple of new schools to  
support the urban sprawl.









You can see the effects of the 2008 recession in the vacant lots.





The Aqueduct intake. This is the largest water transfer system in the world. It was funded by California taxpayers in 1960.





The Aqueduct intake.





The pumping plant that pumps water into the California Aqueduct.







This is the Clifton Court forebay which stores the water which will be shipped south.

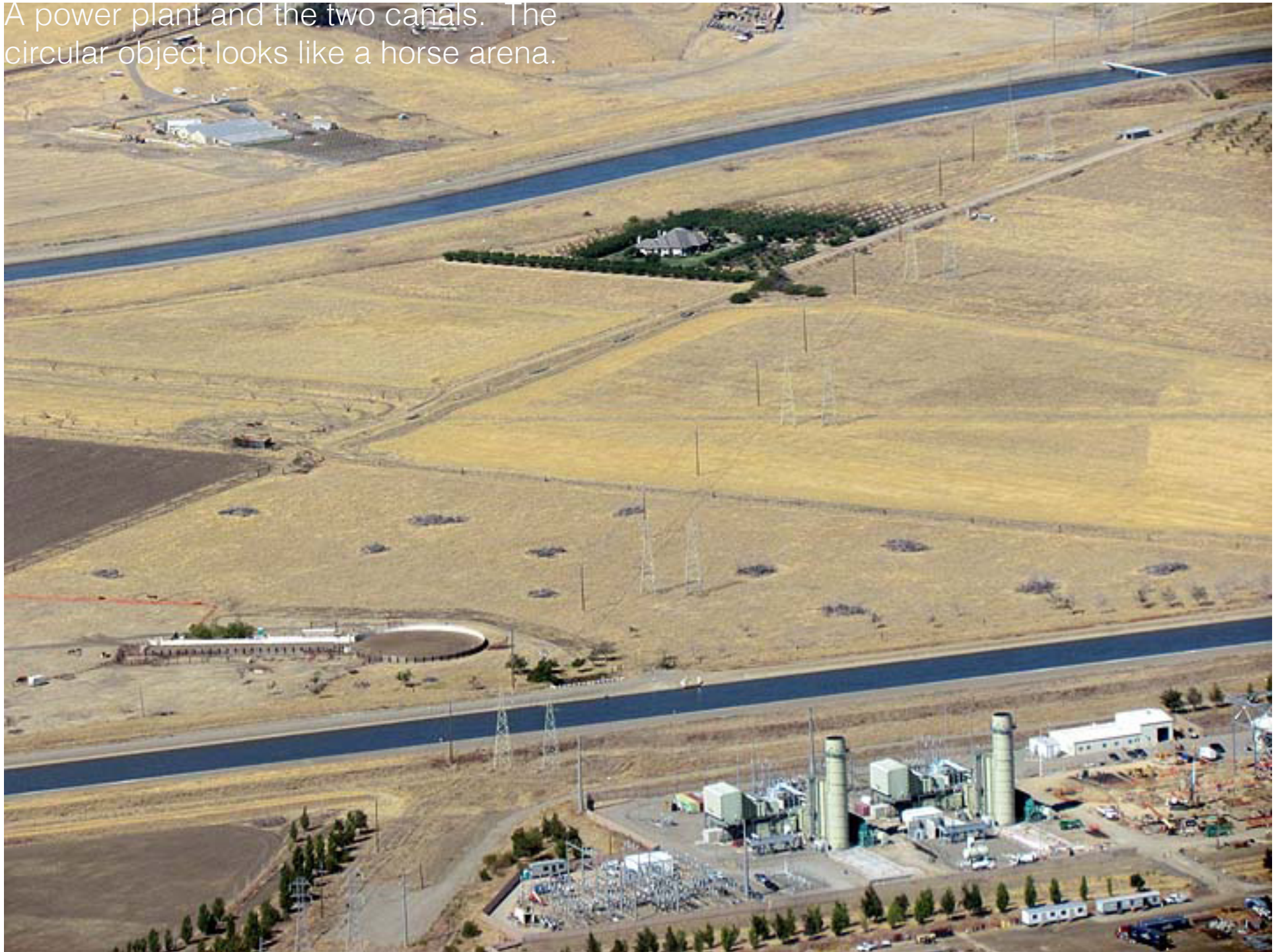




This is Patterson. One of the few cities built upon the circular street pattern.



A power plant and the two canals. The circular object looks like a horse arena.







This is one of the airfields built in World War II to train pilots.





From top to bottom, 1-5. The California Aqueduct which ships water from the Delta to Southern California. Next is the Central Valley Project. At the bottom is a local canal.





Another wildlife refuge. This is the Pacific Flyway for migrating birds.





One of several gravel pits in the Valley.



A wildlife refuge on the  
westside of the Vally

(August 2003)





You can see the complexity of the irrigation systems in the Valley.





There are several dairies or feed-lots in this picture. Cattle and dairy are big industries in the Valley







Friant Dam on the San Joaquin River. All of the water in the river is removed and shipped via two canals up and down the east side of the Valley. The water in the river is replaced via the Central Valley project with water from the Delta.



# The end

These pictures were taken in July 2011. Richard Filson piloted the plane. There is never a dull moment in Delta water politics. Now there is a proposal to construct tunnels underneath the Delta to transfer even more water to the Southland.