

# San Diego County

The San Diego County Courthouse.  
Part 1 of 6: San Diego.



# San Diego County

## San Diego County Data

**Population: 2,813,833 ( Rank: 3)**

**Land Area (square miles): 4,200 (Rank: 9)**

The hills that run behind San Diego and the towns along the coast are the Peninsular Ranges. The main ranges are the San Jacinto, Santa Rosa, Laguna and Santa Ana mountains. Beyond these ranges is the Anza-Borrego Desert, part of the Colorado Desert. Along the coast the climate is warm and sunny all year around. Much of the top of the mountains is located in the Cleveland National Forest.

There are two major routes that run through the area. Most of the development is close to the two Interstates: 5 and 15.

The first settlers were from Mexico and three missions, San Diego, San Luis Rey and San Juan Capistrano, were built in the late 1700's. There were several Indian groups living in the area. Today, there are 19 Indian reservations located in the mountains.

After the Mexican American war American settlement came slowly to the area. Farming, particularly citrus farming, began in the 1870's with the arrival of the railroad. There was also mining in the mountains when gold was discovered in the 1880's. San Diego, now the second largest city in the state, was a small town until the Navy decided to deepen the harbor and build a major base. San Diego began to grow when World War II started. Today the Navy is the largest employer in San Diego. In the last forty years small farm towns have become large, sprawling residential communities. The orange groves have been

replaced by malls and houses.

Manufacturing has long since replaced agriculture. Computers, electronics and machinery and other forms of manufacturing generate over \$11 billion a year.

**Cities: Carlsbad, Chula Vista, Coronado, Del Mar, El Cajon, Encinitas, Escondido, Imperial Beach, La Mesa, Lemon Grove, National City, Oceanside, Poway, San Diego, San Marcos, Santee, Solana Beach, Vista.**

# San Diego County

© 2012 by Larry Stevens  
stevens.lawrence@comcast.net



# Mission San Diego

The mission was built in 1769. This is the fourth church built on this site. (July 2004)



# Mission San Diego

(July 2004)



# Mission San Diego

(July 2004)



# Mission San Diego

(July 2004)



# Civic Center

(February 2008)





# Horton Plaza

(February 2008)



# U.S. Grant Hotel

This historic downtown hotel was built in 1910 by the son of President Grant who named the hotel for his father. The eleven story 270 room hotel is now owned by an Indian tribe. (February 2008)



# Civic Center

(February 2008)



# Horton Plaza

(February 2008)



# Horton Plaza

(February 2008)



# Horton Plaza

(February 2008)



# Horton Plaza

Alonzo Horton was the founder of modern San Diego.  
(February 2008)



# Horton Plaza

The red line goes all the way to the Mexican border. (February 2008)





# Civic Plaza

(February 2008)



# Horton Plaza

(February 2008)



# Train Depot

(December 2001)



# City Hall

(February 2008)



# City Hall

(February 2008)



# Spreckels Theatre

(February 2008)



# Harbor

(February 2008)



# Harbor

(February 2008)





# Harbor

(February 2008)



# Harbor

(February 2008)



# Harbor

(February 2008)



# Harbor

(February 2008)



# Harbor

(February 2008)



# Harbor

(February 2008)



# Harbor

(February 2008)



# Harbor

(February 2008)





# Harbor

(February 2008)



# Harbor

(February 2008)



# Harbor

(February 2008)



# Harbor

(February 2008)



# Mission Bay

The wooden roller coaster was built in 1925. (July 2004)



# Mission Bay

(July 2004)



# Mission Bay

(July 2004)



# Mission Bay

Mission Bay is the ninth largest municipal park in the country. Construction of the park began in 1944. It has 27 miles of shoreline which includes 19 miles of beaches. The park includes Sea World and the Mission Bay Aquatic Center. (July 2004)





# Mission Bay

(July 2004)



# Mission Bay

(July 2004)



# Point Loma

The Cabrillo monument honors the discoverer of San Diego. (July 2004)



# Point Loma

Military use of Pt. Loma began in 1852. A number of naval bases were established here and they were consolidated in 1998. (July 2004)



# Point Loma

(July 2004)



# Point Loma

(July 2004)



# Point Loma

Point Loma's landmark is the lighthouse. It was built in 1854. It ceased operation in the 1890's because it was too high and fog often obscured it. (July 2004)



# Hillcrest

San Diego is made up of dozens of neighborhoods. (July 2004)





# North Park

(July 2004)



# North Park

(July 2004)



# North Park

(July 2004)



# Heritage Park

Heritage Park contains old Victorians which were moved here to preserve them. It is next to Old Town. (September 2008)



# Heritage Park

(September 2008)



# Heritage Park

(September 2008)



# Heritage Park

(September 2008)



# Heritage Park

(September 2008)





# Old Town

The state park preserves old San Diego. It was established in 1968 and contains five of the original adobes. The town was established in 1769. More visit this state park than any other. (September 2008)



# Old Town

(September 2008)



# Old Town

(September 2008)



# Old Town

(September 2008)



# Old Town

(September 2008)



# Old Town

(September 2008)



# Old Town

(September 2008)



# Balboa Park

Balboa Park contains 1,500 acres. It was started in 1868. It was the home to two expositions in 1915 and 1935. (December 2001)





# Balboa Park

(December 2001)



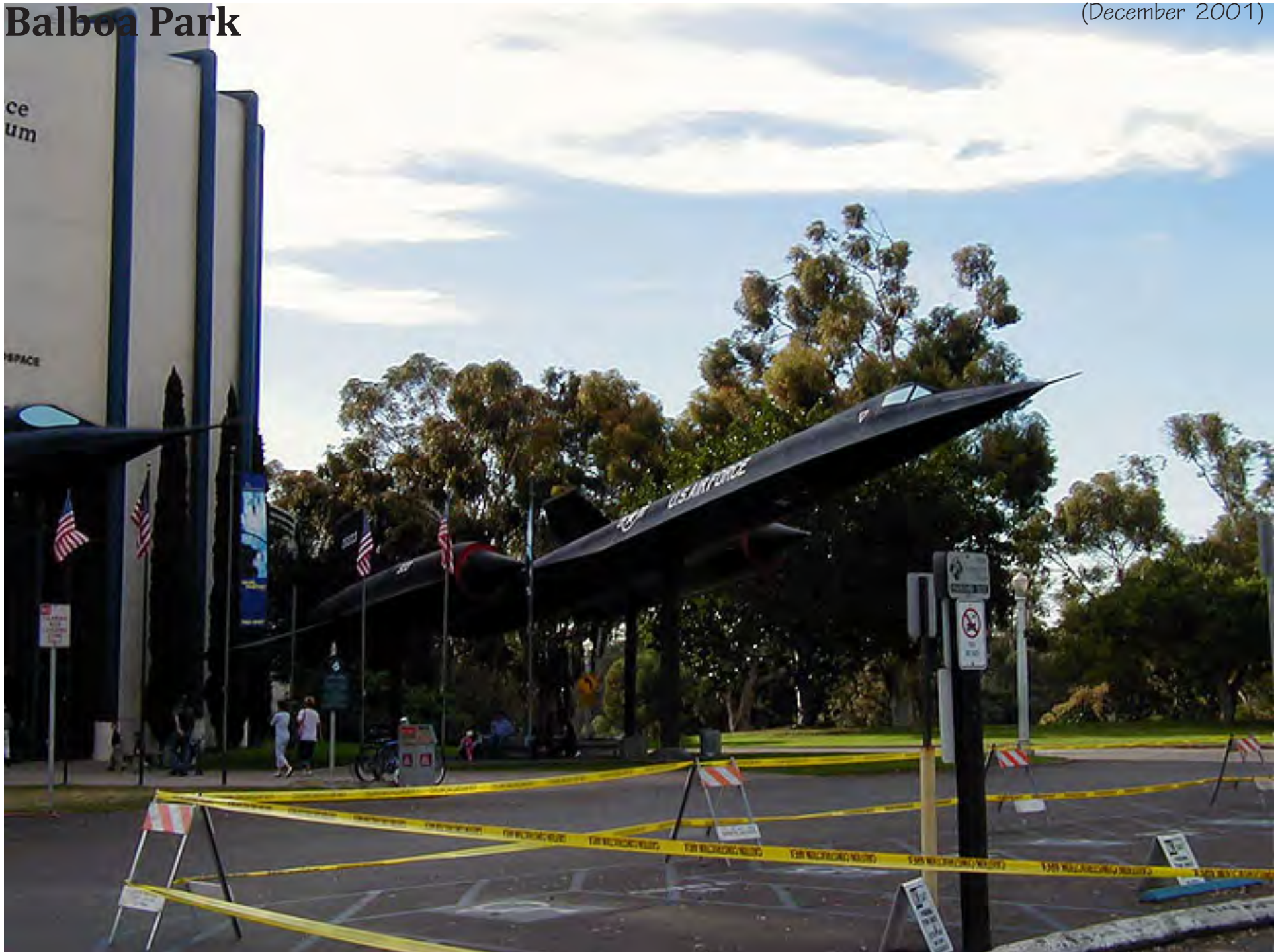
# Balboa Park

(December 2001)



# Balboa Park

(December 2001)



# Balboa Park

(December 2001)



# Balboa Park

(December 2001)



# Balboa Park

(December 2001)



# Balboa Park

(December 2001)

