

Sacramento County

The Sacramento County Courthouse in
Sacramento
Part 2: City of Sacramento



Natomas Area

Sacramento started with Sutter's Fort in 1839. In 1854 it became the capital. The capitol building was built 1874. (May 2003)



Natomas Area

(May 2003)

Sacramento is the sixth largest city in the state with a population of 466,500. (May 2003)



Natomas Area

(May 2003)



Natomas Area

(May 2003)



Uptown (North Sacramento)

(November 2005)



Uptown



Del Paso Blvd. The main street of Uptown.
(November 2005)

Uptown



Uptown was once a separate city, North Sacramento, incorporated in 1924. In 1964 it voted to merge with Sacramento. (November 2005)

Alkali Flats

Alkali Flats is an industrial area north of downtown. (February 2009)



Alkali Flats

(February 2009)



Alkali Flats

The old Southern Pacific rail station downtown. It is still in use. (February 2009)



Alkali Flats

(February 2009)



Old Sacramento

Old Sacramento was revitalized in the early 1960's and has become a major tourist attraction. (December 2006)



Old Sacramento

(December 2006)



Old Sacramento

(December 2006)



Old Sacramento

(December 2006)



Sacramento City Hall



Light Rail on K Street





Chavez Park

Chavez Park



Governor's Mansion





Elks Building



Crest Theatre

The Crest began as a vaudeville theatre in 1912. The great marquee was added later.



Cathedral of the Blessed Sacrament (1889)



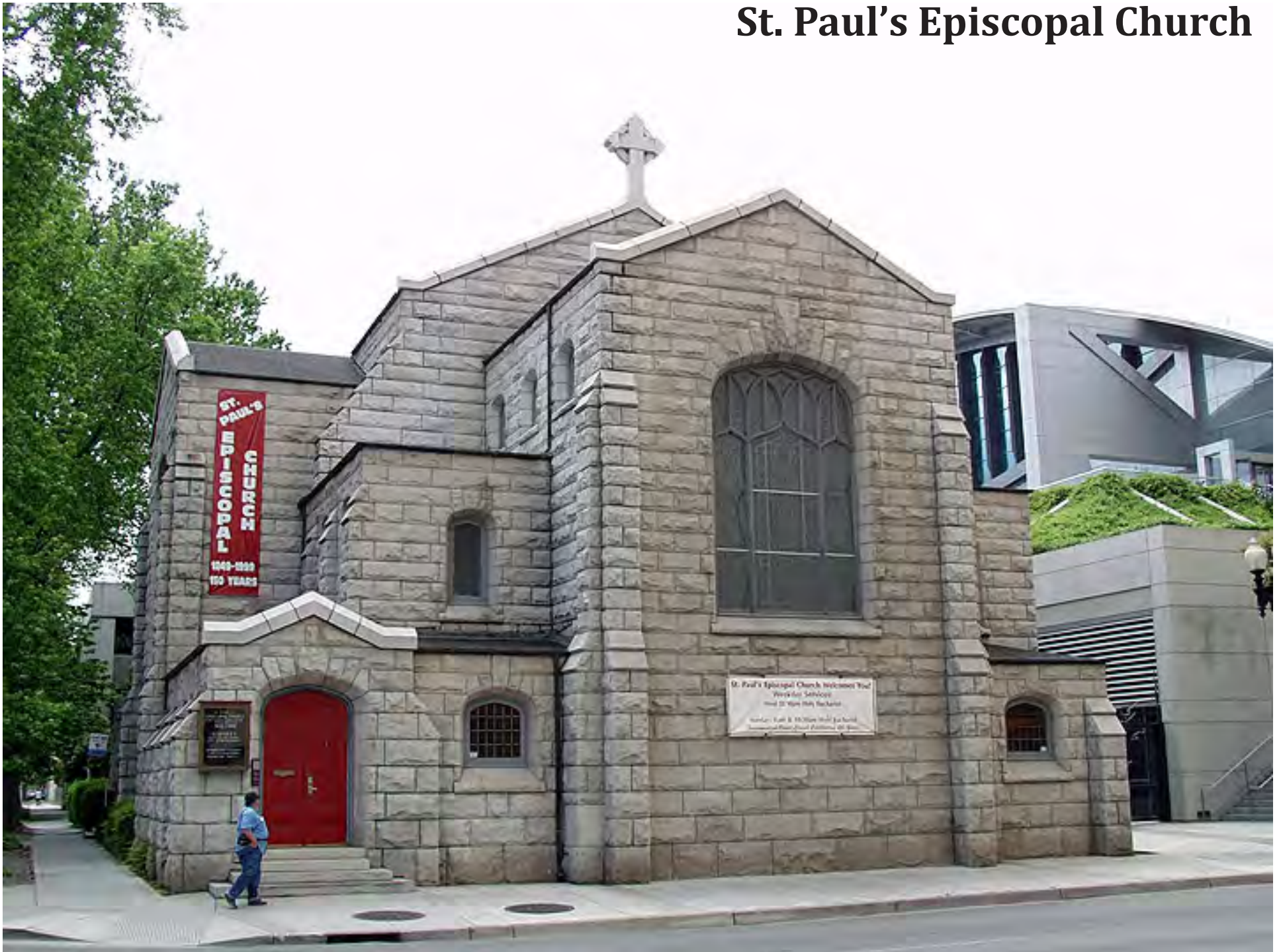
Sacramento Convention Center





The Memorial Auditorium has played a role in many Sacramentan's lives. It opened in February 1927.

St. Paul's Episcopal Church



Senator Hotel

The hotel was built in 1924 and has played a role in California politics.



Public Employees Retirement Fund

PERS takes care of 1.6 million employees and retirees. It is the largest in the country with \$ 180 billion in assets .
(September 2008)



Capitol Mall

The Mall has been undergoing transformation the last ten years with new tall skyscrapers replacing drab state buildings. (February 2009)



Capitol Mall

(February 2009)



Capitol

The part of the state capitol seen in this photo is now a museum.
The legislative chambers are still in use. (February 2009)



Capitol Park

Capitol Park surrounds the capitol with 40 acres containing 1 140 trees of 200 different kinds.



East Mall

New construction east of the Capitol has created a new mall with large art pieces. (February 2009)



East Mall



Capital Mall



Crocker Art Museum

The Crocker began in 1885. A new addition was opened in 2010 that tripled the size of the museum.





Central Neighborhood

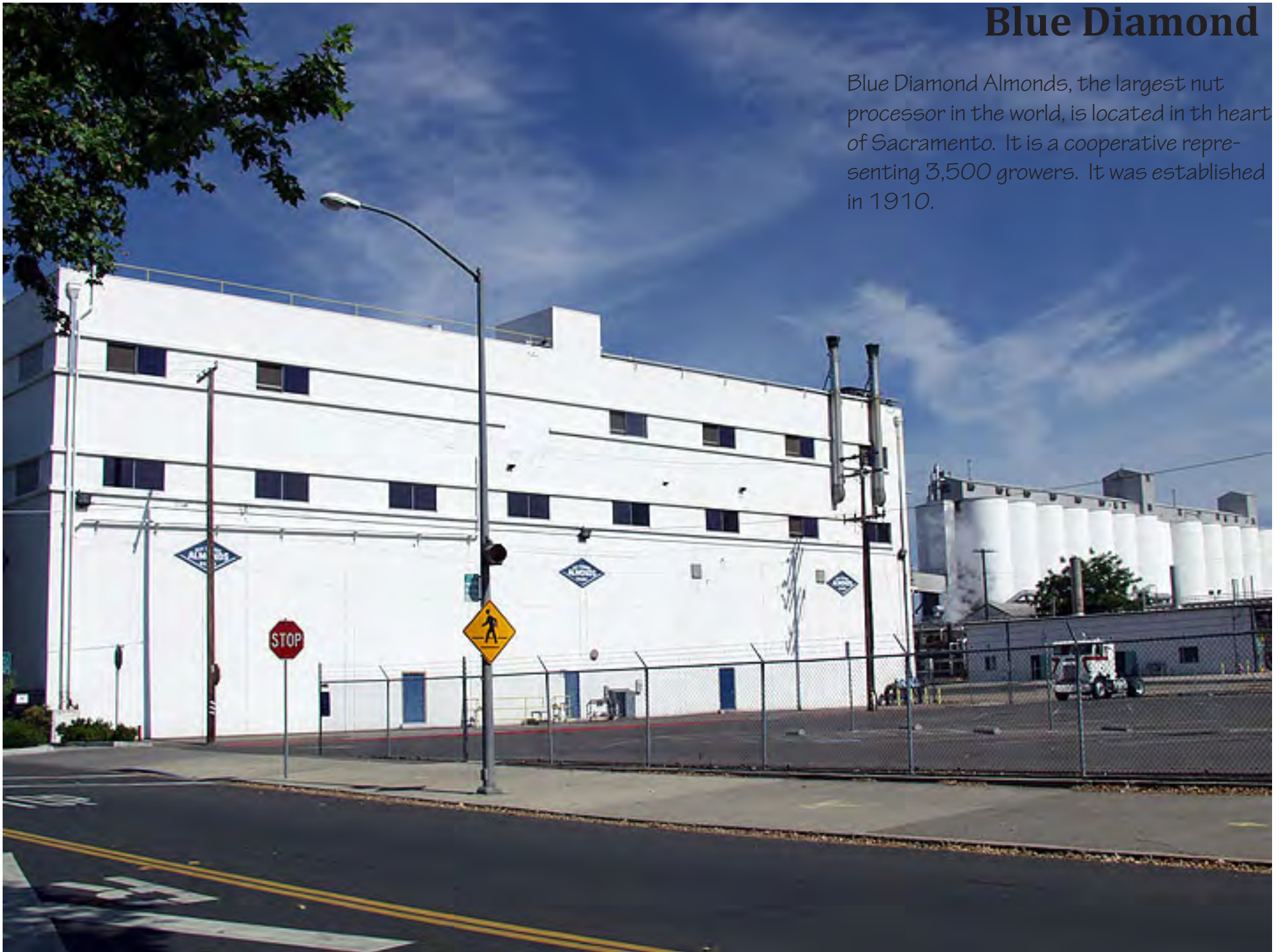


Central Neighborhood

The city is famous for its canopy of trees that covers the 900 blocks of the historic city. They provide natural air conditioning for the hot Valley summers.

Blue Diamond

Blue Diamond Almonds, the largest nut processor in the world, is located in the heart of Sacramento. It is a cooperative representing 3,500 growers. It was established in 1910.





Sacramento State Campus

Sacramento State started in 1947 on the community college campus. It moved to its current location on the banks of the American River in 1953. The student population is around 30,000.



Sacramento State Campus

The county has turned the American River into a parkway that stretches 26 miles from Sacramento to Folsom. The Sac State campus is on the parkway.



Shakey's Pizza

The original Shakey's Pizza Parlour on J St. near the Sac State campus. The pizza parlour opened in 1954 and grew into an international chain. The store was founded by "Shakey" Johnson. It grew to over 500 stores. Today there are about 60 left in California. There are more located in Asian countries.





McKinley Park

Land Park

(May 2003)





Land Park Zoo

Sacramento Cemetery

The cemetery dates back to Sacramento's beginnings. It is maintained as a botanic garden.



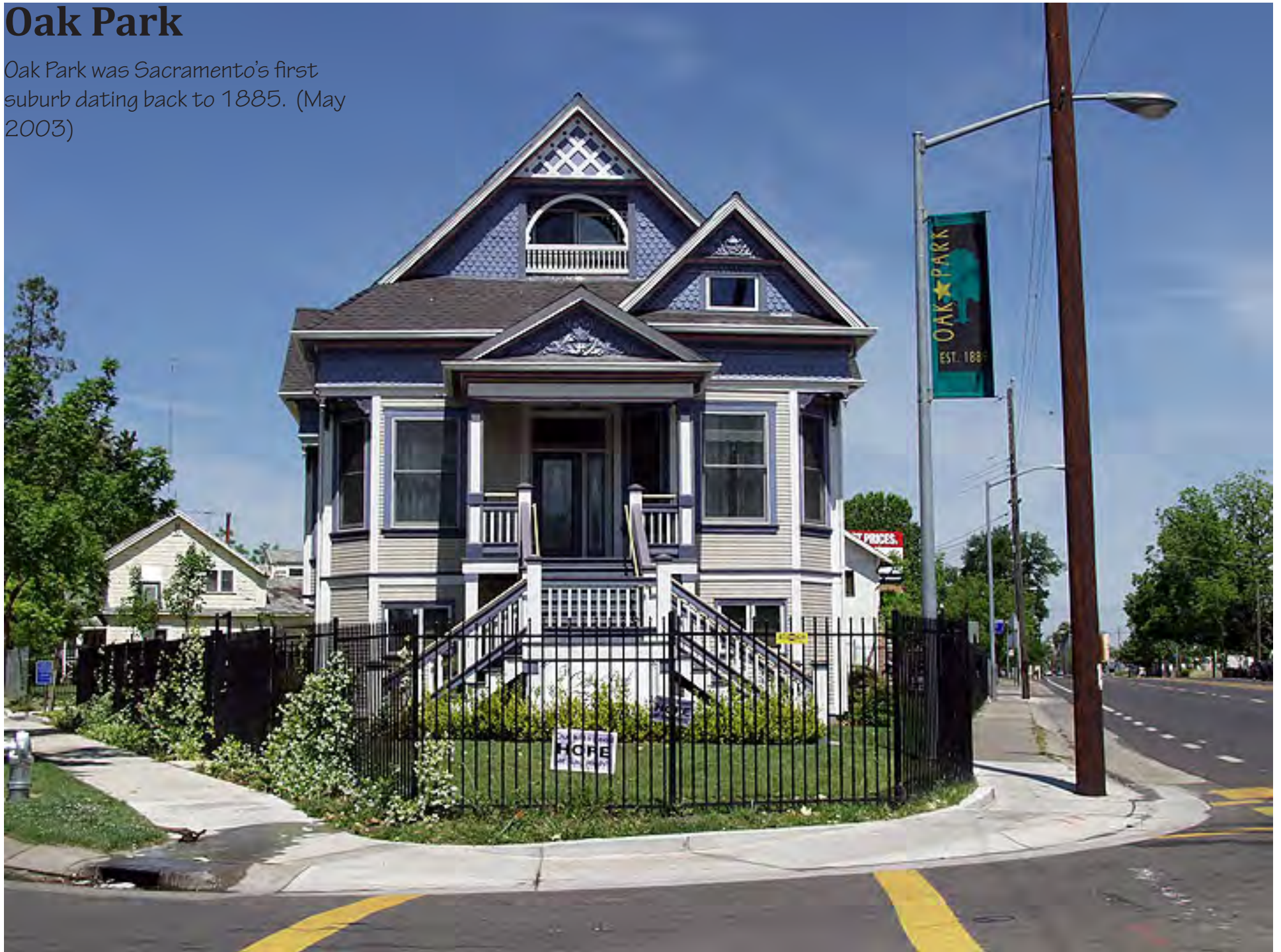
Tower Theatre

The Tower Theatre was the starting point of Tower Books and Records. It began in 1960 in the pharmacy on the right side of the theatre. Russ Solomon built his chain until it was internationally famous. It went bankrupt in 2006.



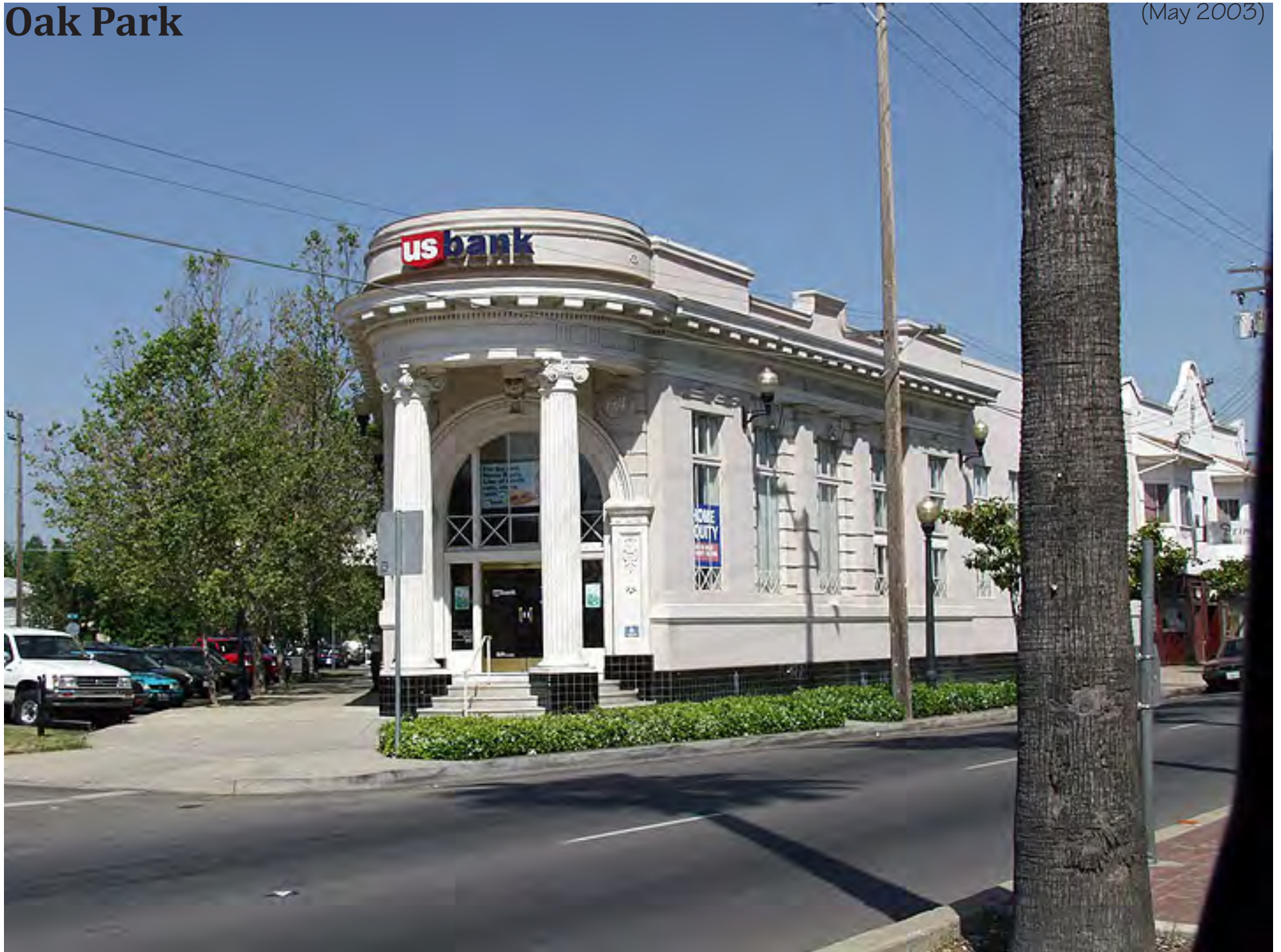
Oak Park

Oak Park was Sacramento's first suburb dating back to 1885. (May 2003)



Oak Park

(May 2003)



Oak Park Library

(May 2003)



Guild Theatre – Oak Park

The Guild Theatre has been for many decades Sacramento's art theatre. (May 2003)



Colonial Heights



UC Davis Med Center

The UC Med Center was built on the old state fairgrounds. It maintains researchers and specialists in 150 medical fields, a 645 bed hospital and a Level 1 trauma center.

