

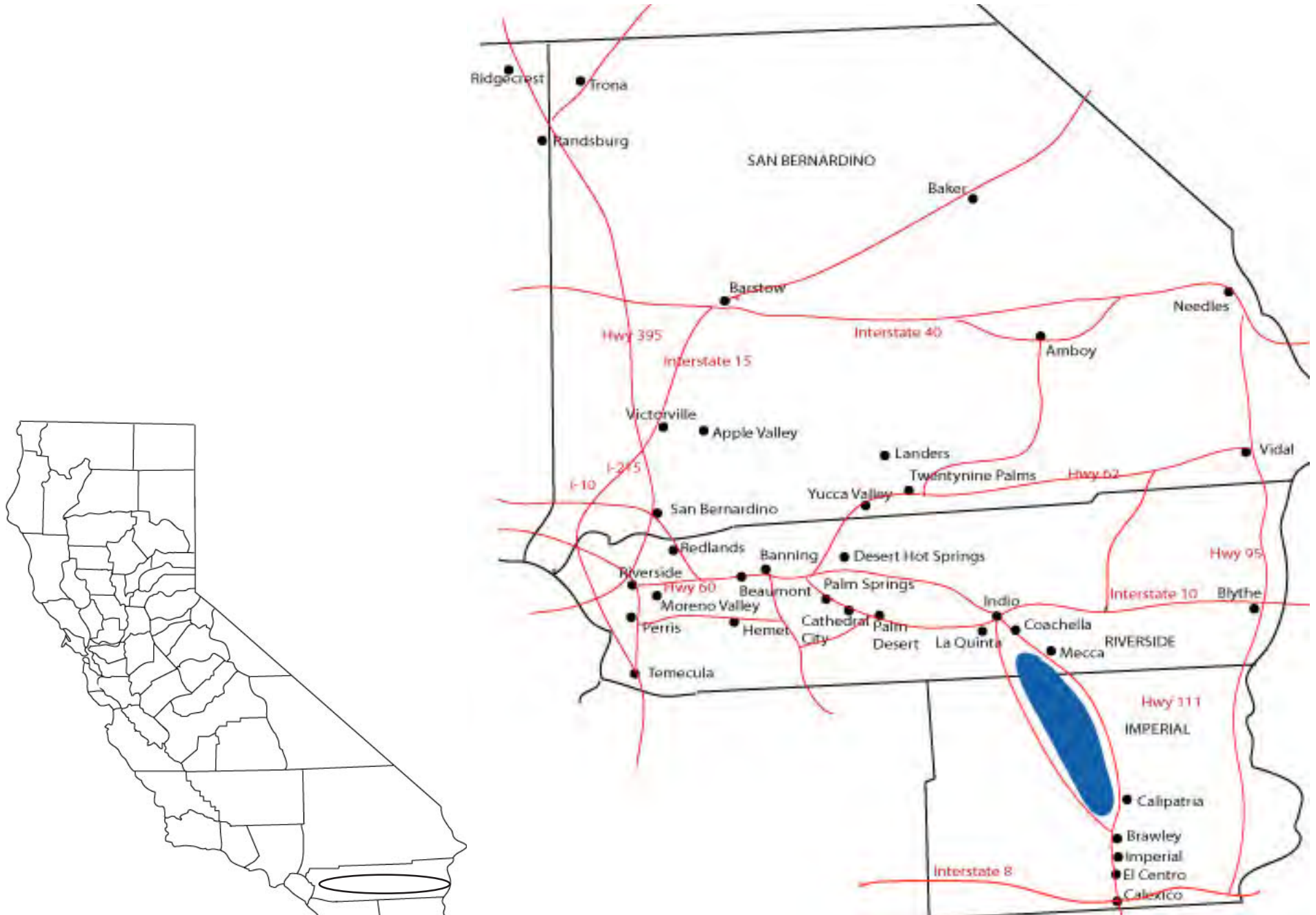
Riverside County

The old County Courthouse in Riverside.
Part 8 of 9: Interstates 10, 15, 215.



Riverside County

© 2012 by Larry Stevens
stevens.lawrence@comcast.net



Corona

Corona was created in 1886 as a citrus community. (May 2004)



Corona

(May 2004)



Norco

Norco (North Corona) became a city in 2003. The population is 27,000.
(May 2004)





Beaumont

Beaumont became a city in 1912. The population is 37,000.



Beaumont

(February 2004)



Beaumont

(February 2004)



Banning

Banning became a city in 1913. Today's population is 30,000.



Banning

(February 2004)



Banning

(February 2004)



Banning

(February 2004)



Banning

(February 2004)



Banning

(February 2004)



Banning

(February 2004)



Banning

(February 2004)



Calimesa

The community became a city in 1990. It has a population of 7,900 and is located on I-10. (February 2004)



Calimesa

(February 2004)



Calimesa

(February 2004)



Calimesa

(February 2004)



Cabazon

Cabazon is famous for its dinosaurs that were built by Claude Bell. Cabazon was a city from 1955 to 1972. Today's population is 2,500. (December 2001)



Lake Elsinore

Lake Elsinore became a city in 1888 and today has a population of 52,000. (May 2004)



Lake Elsinore

(May 2004)



Lake Elsinore

(May 2004)



Lake Elsinore

(May 2004)



Lake Elsinore

(May 2004)



Perris

The population is 68,000. The city was established in 1885 and incorporated 1911. (December 2005)



Perris

(December 2005)



Perris

(December 2005)



Canyon Lake

Canyon Lake is one of five gated cities in California. It started as a planned development in 1968 and was incorporated in 1990. The other gated cities are Hidden Hills, Rolling Hills, Bradley and I can't think of the fifth. (December 2005)



Canyon Lake

(December 2005)



Canyon Lake

(December 2005)



Canyon Lake

(December 2005)



Canyon Lake

(December 2005)



San Jacinto

The city was incorporated in 1888. It has grown to 44,000 people.
(December 2005)



San Jacinto

(December 2005)



San Jacinto

(December 2005)



San Jacinto

(December 2005)



San Jacinto

(December 2005)



San Jacinto

(December 2005)



San Jacinto

(December 2005)



San Jacinto

(December 2005)



San Jacinto

(December 2005)



San Jacinto

(December 2005)



San Jacinto

(December 2005)



San Jacinto

(December 2005)



San Jacinto

(December 2005)



San Jacinto

(December 2005)



Moreno Valley

Moreno Valley is a new rapidly growing city. The town was incorporated in 1984. The population is over 193,000. (December 2005).



Moreno Valley

(December 2005)



Moreno Valley

(December 2005)



Hemet

Hemet is another old town. It was founded in 1887 and became a city in 1916. The population is 79,000. (December 2005)



Hemet

(December 2005)



Hemet

(December 2005)



Temecula

Temecula is an old town that has become a sprawling community in recent years. The population is 100,000. The city incorporated in 1989. (May 2004)



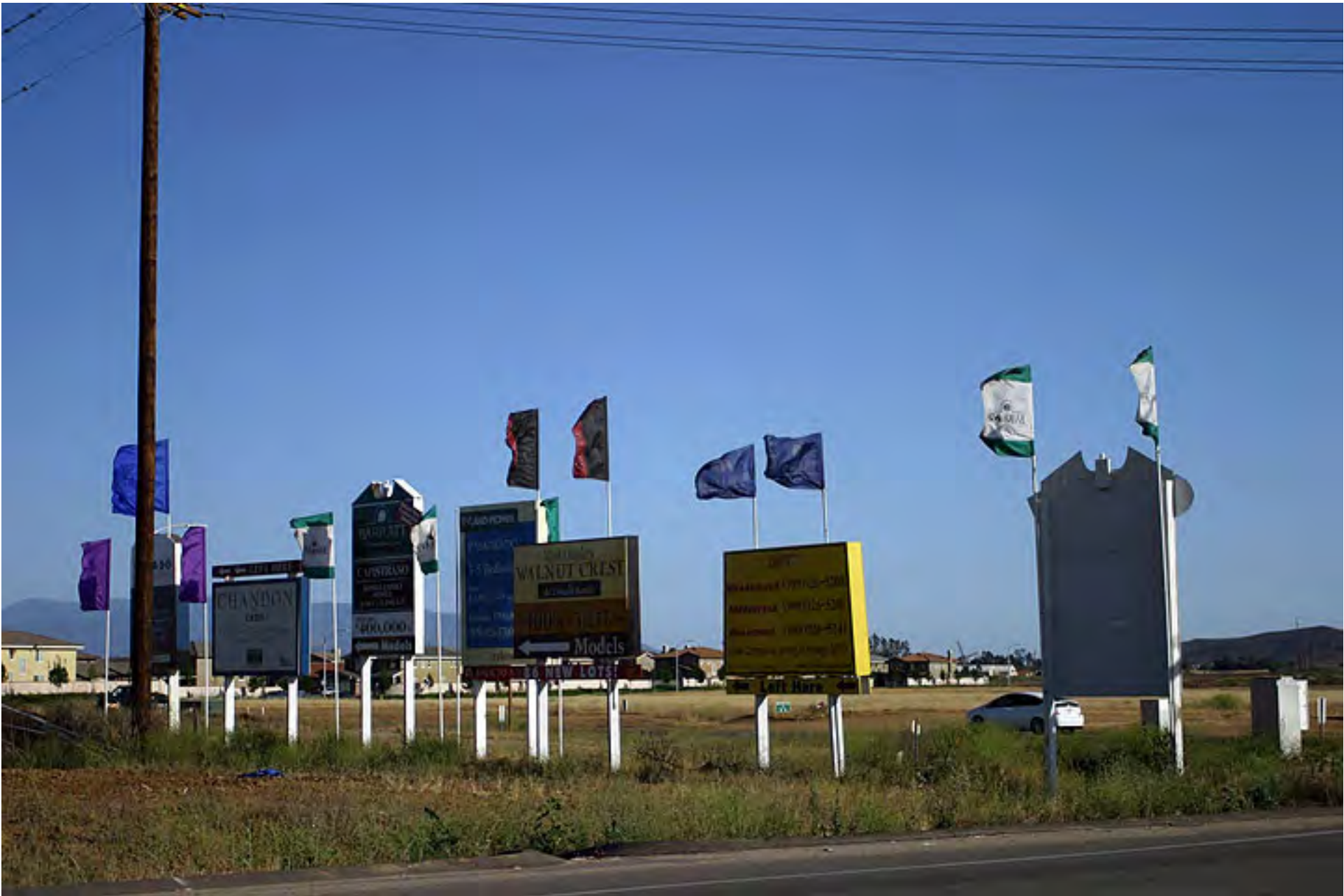
Temecula

(May 2004)



Temecula

(May 2004)



Temecula

(May 2004)



Temecula

(May 2004)



Temecula

(May 2004)



Temecula

(May 2004)



Temecula

(May 2004)



Temecula

(May 2004)



Temecula

(May 2004)



Temecula

(May 2004)



Murrieta

The town became a city in 1991 and the population has reached 103,000.

