

Yuba County

The Yuba County Courthouse in Marysville.



Yuba County

Population: 60,219 (Rank: 39)

Land Area (square miles): 603 (Rank: 53)

Yuba County stretches from the valley and the Feather River to the Sierra foothills. The western boundary is the Feather River and the southern boundary is the Bear River. The Yuba River cuts through the middle of the county.

Most of the population is clustered around Marysville and Beale Air Force Base. Beale was established as an army camp in 1942. It trained soldiers and housed German war prisoners. After World War II it became an air force base. It was a base for nuclear-toting intercontinental missiles and later the home base of the SR-71 Blackbird, the fastest plane ever. Today, it hosts drones.

Yuba is one of the original 27 counties of California. It was named for the Yuba River. There are two versions of the origin of the name Yuba. Mariano Vallejo claimed that the Yuba River was named Uba by Spanish explorers in 1824 for the wild grapes (“uvas silvestres” in Spanish) growing along the banks. The second version is that John Sutter named the river for the Indian village of Yubu, Yupu or Juba, which was located near the confluence of Feather and Yuba Rivers.

The west part of the county is agricultural and the leading industry is farming. Rice, dried plums, peaches, English walnuts, and cattle are the leading farm products. This is where the Thompson seedless grape and the Philipps cling peach were developed.

The area has been impoverished but is on the upswing. An events center and motor speedway are located south of Marysville along Highway 65. There is also a large hous-

Introduction

California is comprised of 58 counties. The state, the third largest in the U.S., has the greatest diversity of geography of any of the states. It has huge deserts, high mountain ranges, fertile valleys and a 1000 mile coastline. Beginning in 2001 my wife and I began to travel and photograph the state as a retirement hobby.

In 2009 we published a CD containing about 4,000 photos of the regions of the state. Since that time we have added about 10,000 more photos to our collection. It was also at this time (December 2008) I began to send a photographic diary of our trips to friends and people with an interest in California geography.

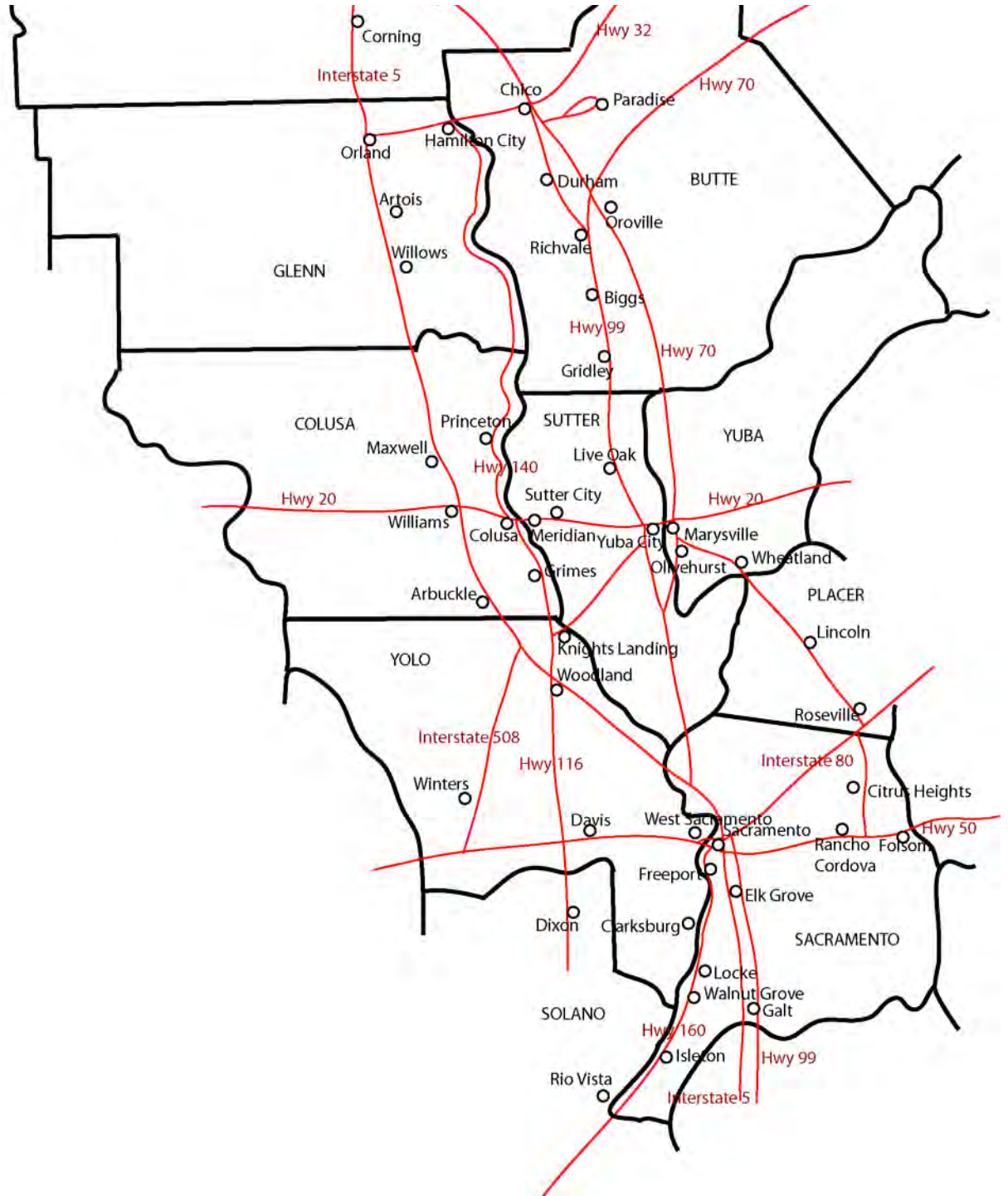
Now we are organizing our collection by county using all of our photos dating back to 2001.

© 2012 by Larry Stevens
stevens.lawrence@comcast.net

ing development under construction in the Arboga area along Highway 70.

Cities: Marysville. Towns: Linda, Olivehurst.

Yuba County



Marysville

At the end of D Street (the main street) is the Bok Hai Temple. Bok Hai is the water god. Each year there is parade to honor Bok Hai. This year is the 132nd celebration. (January 2001)



Marysville

Marysville has a relatively large Chinatown. The temple itself faces the river. (February 2012)



Marysville



(January 2001)

Marysville

(January 2007)



Marysville

(January 2007)



Marysville

In the middle of Marysville is Ellis Lake. (January 2001)



Marysville

This is one of two bridges that connect the cities of Yuba City and Marysville. This is the oldest and the trolley use to run on this bridge. (January 2001)



Marysville

D Street, the main street of town. (January 2007))



Marysville

(January 2007)



Marysville

The abandoned Hotel Marysville. (January 2007)



Marysville

(January 2007)



Marysville

The Episcopal Church, (January 2007)



Marysville

(January 2007)



Marysville

There are a lot of old buildings in Marysville. The Catholic Church dates back to the 1850's.



Marysville

The City Hall dates back to 1937. (January 2007)



Marysville

(January 2007)



Marysville

(January 2007)





Marysville

(April 2002)



Marysville

(April 2002)



Marysville

(April 2002)



Marysville

(April 2002)



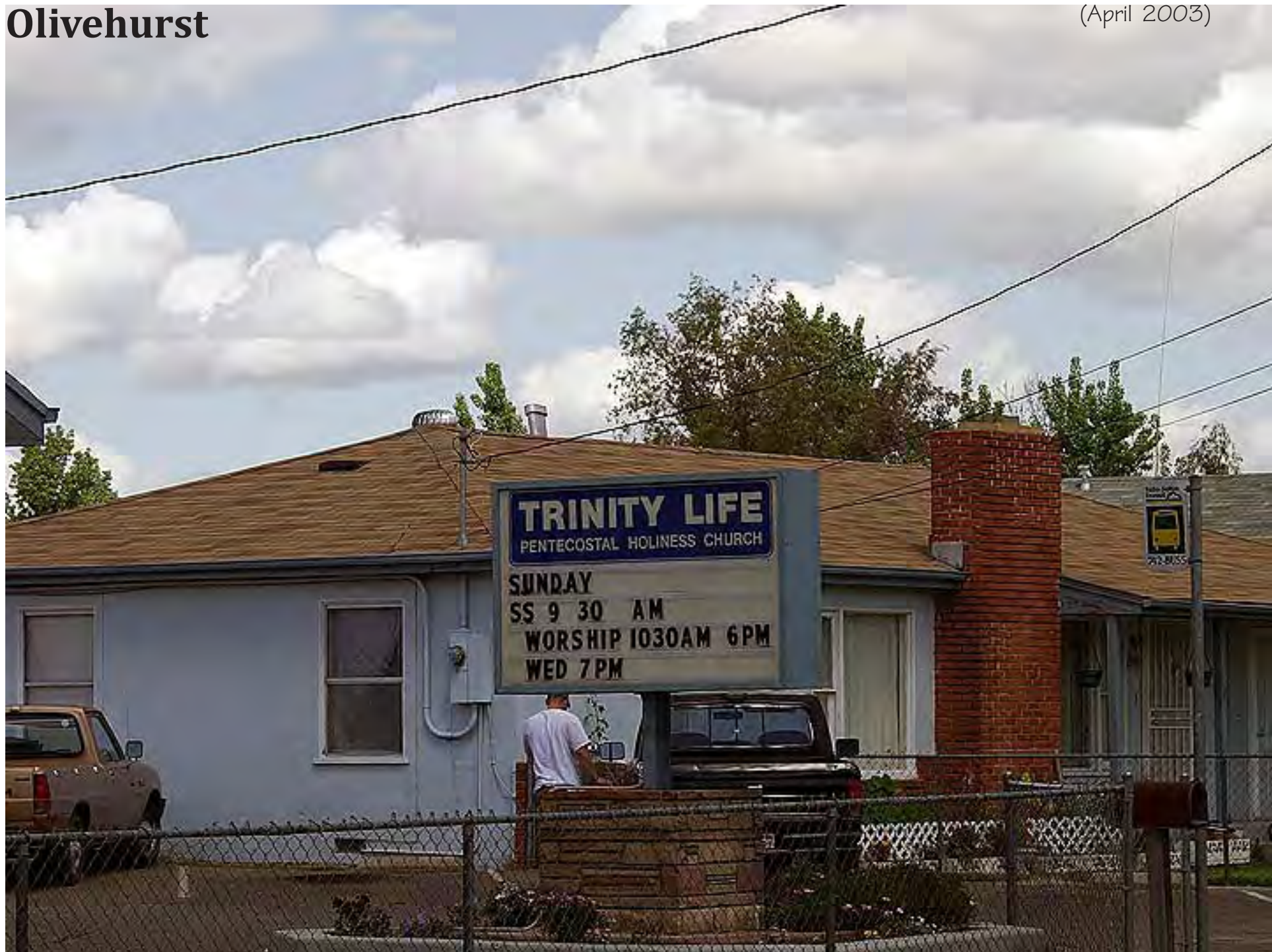
Olivehurst



Olivehurst is south of Marysville. It is where migrants from Oklahoma settled in the Twenties and Thirties. (April 2003)

Olivehurst

(April 2003)



Olivehurst

(April 2003)



Olivehurst

(April 2003)



Olivehurst

(April 2003)



Wheatland

Wheatland has an interesting history. It was the first city in California to have a black mayor back in the 1880's. (April 2009)



Wheatland

Wheatland was the location of the first farm labor strike in the state. It was organized by the Industrial Workers of the World which was active in the state in the early 20th Century. (April 2009)



Wheatland

(April 2009)



Wheatland

(April 2009)



Wheatland

(April 2009)



Wheatland

(April 2009)



Wheatland

(April 2009)



Wheatland

(April 2009)



Wheatland

(April 2009)



Wheatland

(April 2009)



Loma Rica

(June 2006)



Loma Rica

(June 2006)



Loma Rica

(June 2006)



Oregon House

(June 2006)



Oregon House

(June 2006)



Bullards Bar Dam

(June 2006)



Dobbins

Dobbins was founded in 1849 by William and Mark Dobbins. The post office has continuously operated since 1887. The population is 624. (June 2006)



Dobbins

(June 2006)



Smartville

Smartville was named for gold rush settler Jim Smart. The community has a population of 177. When the post office opened in 1865 it was called Smartsville. In 1909 the post office changed it to Smartville. The Board of Geographic Names changed it back to Smartsville in 2008. Go Figure. (June 2006)



Smartville



Smartville



Smartville

