

San Francisco

Vol. V

**Nob Hill Views
Coit Tower
Asian Museum
Market Street
Union Square**

These photos were taken by Larry Stevens over a ten year period. This is part of a collection of 360 photos. This booklet was published in 2014.

View from Nob Hill

(July 2012)



View from Nob Hill

(July 2012)



View from Nob Hill

(July 2012)



View from Nob Hill

(July 2012)



View from Nob Hill

(July 2012)



View from Nob Hill

(July 2012)



Coit Tower

The Coit Tower is 210 feet tall and was built in 1933. (July 2012)



Coit Tower

(July 2012)



View from Coit Tower

(July 2012)



Coit Tower

(July 2012)



Asian Museum

(July 2009)



Asian Museum

The Asian Museum is located in the old San Francisco Library. It houses the collection of Avery Brundage, a Chicago developer. (July 2009)



Asian Museum

(July 2009)







Asian Museum

(July 2009)



Market Street

(May 2009)



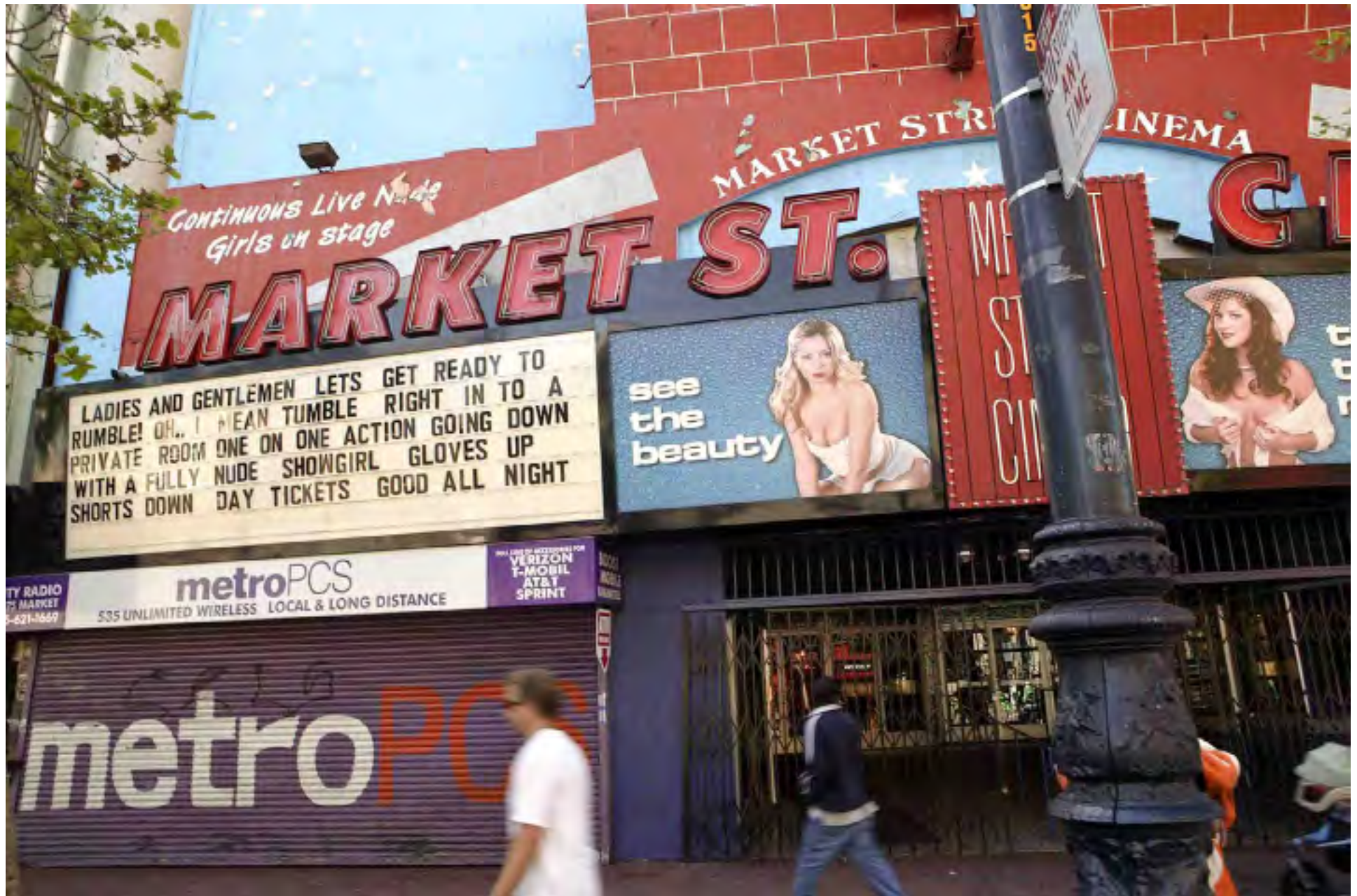
Market Street

The new Federal Building. It is 18 stories tall and is naturally ventilated. The building was designed by Morphosis. The same design firm that designed the Caltrans building in Los Angeles. (May 2009)



Market Street

(May 2009)



Market Street

(May 2009)



Market Street

Looking east on Market. Market street was designed by Jasper O'Farrell in the 1800's. The three mile long street was the widest in the city at 120 feet. Van Ness is now 125 feet. Market divides the City in half. (May 2009)



Market Street

(May 2009)



Market Street

The Powell Street cable car turn around. (May 2009)



Market Street

(May 2009)



Market Street

(May 2009)



Market Street

(May 2009)



Market Street

The Palace Hotel was built in 1875 and burned in the 1906 Earthquake. The new Palace was opened in 1909. (May 2009)



Market Street

(May 2009)



Market Street

(May 2009)



Market Street

(May 2009)



Market Street

(May 2009)



Market Street

(May 2009)



Market Street

William Matson was an early settler in San Francisco and with the help of Claus Spreckels started the Matson Navigation Company. Matson lines played an important role in the development of Hawaii as a tourist destination. (May 2009)



Market Street

(May 2009)



Market Street

(May 2009)



Market Street – Ferry Building

The Ferry Building was open in 1898. It survived the 1906 and the 1989 earthquakes. (May 2009)



Market Street

The end of Market Street looking west. (May 2009)



Market Street

Historic street cars run along the Embarcadero. (May 2009)



Market Street – Ferry Building

The interior of the Ferry building has become a gourmet food court.
(May 2009)



Market Street – Justin Herman Plaza

The fountain was designed by Francois Vaillancourt. It was built in 1971. (May 2009)



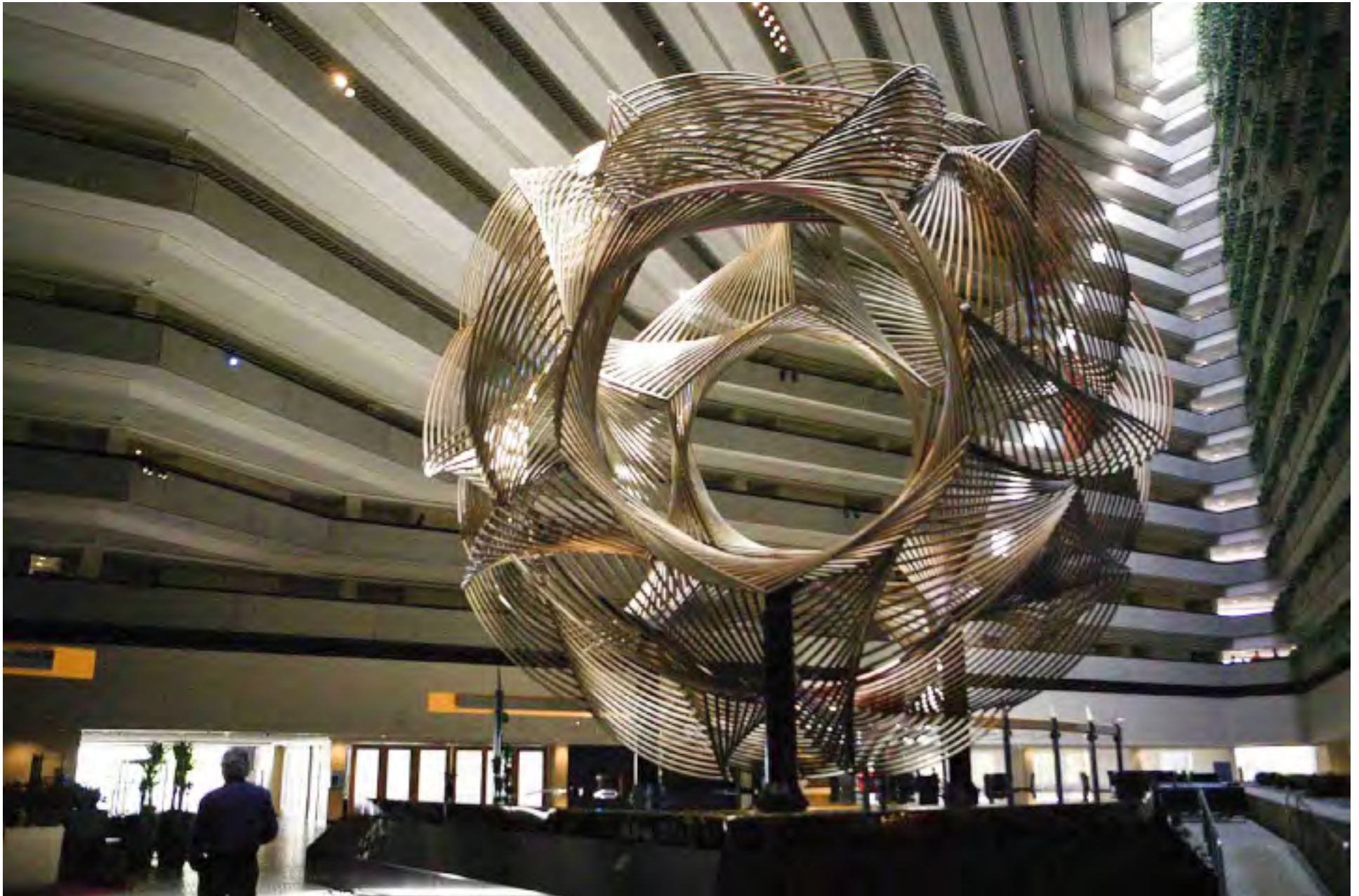
Market Street

The Hyatt was completed in 1973 and is part of the Embarcadero Center. The center has four high rises which were constructed from 1971 to 1995. (May 2009)



Market Street

The atrium of the Hyatt Regency Hotel. This is one of architect Robert Portman's hotels that are noted for their atriums. (May 2009)



Market Street

(May 2009)



Market Street

The Mechanic's Monument on Market Street. (May 2009)



Market Street

(May 2009)



Market Street

(May 2009)



Market Street

(May 2009)



Market Street

Sherman and Clay is a famous music store that began in San Francisco in 1870. It was started by Leander Sherman. Clay became his partner in 1876. Sherman was an early supporter of the San Francisco Symphony. The music store expanded with stores in many western cities. Sherman died in 1926. (May 2009)



Union Square

Union Square was established in 1850. It is named because of the rallies held here to support the Union during the Civil War. The first underground parking garage was built here in 1941. (January 2010)



Union Square

(January 2010)

